

Product datasheet for **TA334401**

JAML Rabbit Polyclonal Antibody

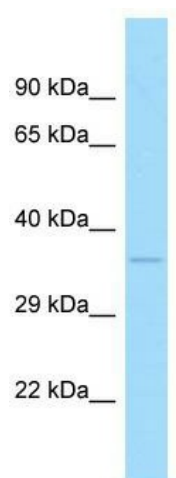
Product data:

Product Type:	Primary Antibodies
Applications:	WB
Recommended Dilution:	WB
Reactivity:	Human
Host:	Rabbit
Isotype:	IgG
Clonality:	Polyclonal
Immunogen:	The immunogen for anti-AMICA1 antibody is: synthetic peptide directed towards the C-terminal region of Human AMICA1. Synthetic peptide located within the following region: VCATILLLPVLILIVKKTCTCGNKSSVNSTVLVKNTKKTNPENMKEKPCHEFER
Formulation:	Liquid. Purified antibody supplied in 1x PBS buffer with 0.09% (w/v) sodium azide and 2% sucrose. <i>Note that this product is shipped as lyophilized powder to China customers.</i>
Purification:	Affinity Purified
Conjugation:	Unconjugated
Storage:	Store at -20°C as received.
Stability:	Stable for 12 months from date of receipt.
Predicted Protein Size:	33 kDa
Gene Name:	junction adhesion molecule like
Database Link:	NP_001091996 Entrez Gene 120425 Human Q86YT9
Background:	The function of this protein remains unknown.
Synonyms:	AMICA; AMICA1; CREA7-1; CREA7-4; Gm638
Note:	Immunogen Sequence Homology: Human: 100%
Protein Families:	Transmembrane



[View online »](#)

Product images:



Host: Rabbit; Target Name: AMICA1; Sample
Tissue: MCF7 Whole Cell lysates; Antibody
Dilution: 1.0 ug/ml