

Product datasheet for **TA334400**

SLC35G3 Rabbit Polyclonal Antibody

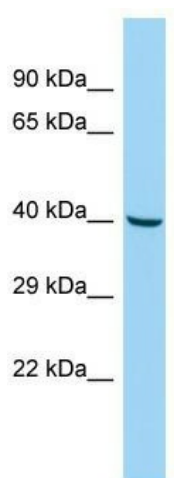
Product data:

Product Type:	Primary Antibodies
Applications:	WB
Recommended Dilution:	WB
Reactivity:	Human
Host:	Rabbit
Isotype:	IgG
Clonality:	Polyclonal
Immunogen:	The immunogen for anti-SLC35G3 antibody is: synthetic peptide directed towards the N-terminal region of Human SLC35G3. Synthetic peptide located within the following region: PPSLRWYQRCQPSDATSGLLVALLGGGLPAGFVGPLSRMAYQASNLP SLE
Formulation:	Liquid. Purified antibody supplied in 1x PBS buffer with 0.09% (w/v) sodium azide and 2% sucrose. <i>Note that this product is shipped as lyophilized powder to China customers.</i>
Purification:	Affinity Purified
Conjugation:	Unconjugated
Storage:	Store at -20°C as received.
Stability:	Stable for 12 months from date of receipt.
Predicted Protein Size:	37 kDa
Gene Name:	solute carrier family 35 member G3
Database Link:	NP_689675 Entrez Gene 146861 Human Q8N808
Background:	The function of this protein remains unknown.
Synonyms:	AMAC1; TMEM21A
Note:	Immunogen Sequence Homology: Human: 100%
Protein Families:	Transmembrane



[View online »](#)

Product images:



Host: Rabbit; Target Name: SLC35G3; Sample
Tissue: Fetal Liver lysates; Antibody Dilution: 1.0
ug/ml