

Product datasheet for **TA334398**

ALG10B Rabbit Polyclonal Antibody

Product data:

Product Type:	Primary Antibodies
Applications:	WB
Recommended Dilution:	WB
Reactivity:	Human
Host:	Rabbit
Isotype:	IgG
Clonality:	Polyclonal
Immunogen:	The immunogen for anti-ALG10B antibody is: synthetic peptide directed towards the N-terminal region of Human ALG10B. Synthetic peptide located within the following region: SVGNFYLLYLLFHKVQPRNKAASSIQRVLSTLTLAVFPTLYFFNFLYYTE
Formulation:	Liquid. Purified antibody supplied in 1x PBS buffer with 0.09% (w/v) sodium azide and 2% sucrose. <i>Note that this product is shipped as lyophilized powder to China customers.</i>
Purification:	Affinity Purified
Conjugation:	Unconjugated
Storage:	Store at -20°C as received.
Stability:	Stable for 12 months from date of receipt.
Predicted Protein Size:	55 kDa
Gene Name:	ALG10B, alpha-1,2-glucosyltransferase
Database Link:	NP_001013642 Entrez Gene 144245 Human Q5I7T1
Background:	ALG10B is a putative alpha-1,2-glucosyltransferase, which adds the third glucose residue to the lipid-linked oligosaccharide precursor for N-linked glycosylation. ALG10B transfers glucose from dolichyl phosphate glucose (Dol-P-Glc) onto the lipid-linked oligosaccharide Glc2Man9GlcNAc(2)-PP-Dol. When coupled to KCNH2 may reduce KCNH2 sensitivity to classic proarrhythmic drug blockade, possibly by mediating glycosylation of KCNH2.
Synonyms:	ALG10; KCR1



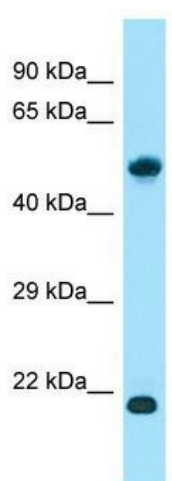
[View online »](#)

Note: Immunogen Sequence Homology: Human: 100%; Dog: 86%; Pig: 86%; Rat: 86%; Horse: 86%; Mouse: 86%; Rabbit: 86%; Guinea pig: 86%

Protein Families: Transmembrane

Protein Pathways: Metabolic pathways, N-Glycan biosynthesis

Product images:



WB Suggested Anti-ALG10B Antibody; Titration: 1.0 ug/ml; Positive Control: Fetal Brain