

## Product datasheet for **TA334397**

### ALDH16A1 Rabbit Polyclonal Antibody

#### Product data:

Product Type:	Primary Antibodies
Applications:	WB
Recommended Dilution:	WB
Reactivity:	Human
Host:	Rabbit
Isotype:	IgG
Clonality:	Polyclonal
Immunogen:	The immunogen for anti-ALDH16A1 antibody is: synthetic peptide directed towards the N-terminal region of Human ALDH16A1. Synthetic peptide located within the following region: YGPVPESHACALAWLDTQDRCLGHYVNGKWLKPEHRNSVPCQDPITGENL
Formulation:	Liquid. Purified antibody supplied in 1x PBS buffer with 0.09% (w/v) sodium azide and 2% sucrose.
Purification:	Affinity Purified
Conjugation:	Unconjugated
Storage:	Store at -20°C as received.
Stability:	Stable for 12 months from date of receipt.
Predicted Protein Size:	33 kDa
Gene Name:	aldehyde dehydrogenase 16 family member A1
Database Link:	<a href="#">NP_699160</a> <a href="#">Entrez Gene 126133 Human</a> <a href="#">Q8IZ83</a>
Background:	This gene encodes a member of the aldehyde dehydrogenase superfamily. The family members act on aldehyde substrates and use nicotinamide adenine dinucleotide phosphate (NADP) as a cofactor. This gene is conserved in chimpanzee, dog, cow, mouse, rat, and zebrafish. The protein encoded by this gene interacts with maspardin, a protein that when truncated is responsible for Mast syndrome. Alternatively spliced transcript variants encoding different isoforms have been found for this gene.
Synonyms:	MGC10204

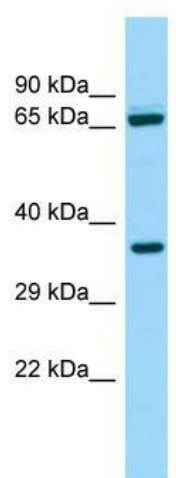


[View online »](#)

**Note:** Immunogen Sequence Homology: Rat: 100%; Human: 100%; Dog: 93%; Pig: 93%; Horse: 93%; Guinea pig: 93%; Mouse: 92%; Bovine: 86%; Rabbit: 79%

**Protein Families:** Druggable Genome

**Product images:**



Host: Rabbit; Target Name: ALDH16A1; Sample Tissue: ACHN Whole Cell lysates; Antibody Dilution: 1.0 ug/ml