

Product datasheet for **TA334396**

ACTR6 Rabbit Polyclonal Antibody

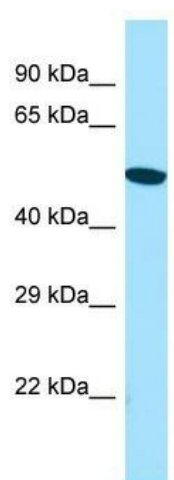
Product data:

Product Type:	Primary Antibodies
Applications:	WB
Recommended Dilution:	WB
Reactivity:	Human
Host:	Rabbit
Isotype:	IgG
Clonality:	Polyclonal
Immunogen:	The immunogen for anti-ACTR6 antibody is: synthetic peptide directed towards the C-terminal region of Human ACTR6. Synthetic peptide located within the following region: TIKKGFCCKPREEMVLSGKYKSGEQILRLANERFAVPEILFNPSDIGIQEM
Formulation:	Liquid. Purified antibody supplied in 1x PBS buffer with 0.09% (w/v) sodium azide and 2% sucrose. <i>Note that this product is shipped as lyophilized powder to China customers.</i>
Purification:	Affinity Purified
Conjugation:	Unconjugated
Storage:	Store at -20°C as received.
Stability:	Stable for 12 months from date of receipt.
Predicted Protein Size:	44 kDa
Gene Name:	ARP6 actin-related protein 6 homolog
Database Link:	NP_071941 Entrez Gene 64431 Human Q9GZN1
Background:	The function of this protein remains unknown.
Synonyms:	ARP6; CDA12; hARP6; hARPX; HSPC281; MSTP136
Note:	Immunogen Sequence Homology: Dog: 100%; Pig: 100%; Rat: 100%; Horse: 100%; Human: 100%; Mouse: 100%; Bovine: 100%; Rabbit: 100%; Guinea pig: 86%



[View online »](#)

Product images:



WB Suggested Anti-ACTR6 Antibody; Titration: 1.0 ug/ml; Positive Control: Jurkat Whole Cell