

Product datasheet for **TA334394**

UQCRQ Rabbit Polyclonal Antibody

Product data:

Product Type:	Primary Antibodies
Applications:	WB
Recommended Dilution:	WB
Reactivity:	Human
Host:	Rabbit
Isotype:	IgG
Clonality:	Polyclonal
Immunogen:	The immunogen for anti-UQCRQ antibody is: synthetic peptide directed towards the middle region of Human UQCRQ. Synthetic peptide located within the following region: KGIPNVLRRIRESFFRVVPQFVVFYLIYTWGTEEFERSKRKNPAAAYENDK
Formulation:	Liquid. Purified antibody supplied in 1x PBS buffer with 0.09% (w/v) sodium azide and 2% sucrose. <i>Note that this product is shipped as lyophilized powder to China customers.</i>
Purification:	Affinity Purified
Conjugation:	Unconjugated
Storage:	Store at -20°C as received.
Stability:	Stable for 12 months from date of receipt.
Predicted Protein Size:	10 kDa
Gene Name:	ubiquinol-cytochrome c reductase complex III subunit VII
Database Link:	NP_055217 Entrez Gene 27089 Human O14949
Background:	This gene encodes a ubiquinone-binding protein of low molecular mass. This protein is a small core-associated protein and a subunit of ubiquinol-cytochrome c reductase complex III, which is part of the mitochondrial respiratory chain.
Synonyms:	MC3DN4; QCR8; QP-C; QPC; UQCR7
Note:	Immunogen Sequence Homology: Dog: 100%; Pig: 100%; Human: 100%; Bovine: 100%; Rat: 92%; Mouse: 92%; Rabbit: 92%; Guinea pig: 92%



[View online »](#)

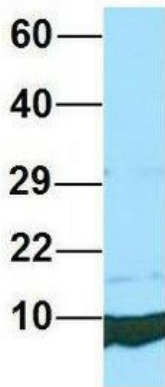
Protein Pathways: Alzheimer's disease, Cardiac muscle contraction, Huntington's disease, Metabolic pathways, Oxidative phosphorylation, Parkinson's disease

Product images:



WB Suggested Anti-UQCRQ Antibody; Titration: 1.0 ug/ml; Positive Control: Fetal Liver

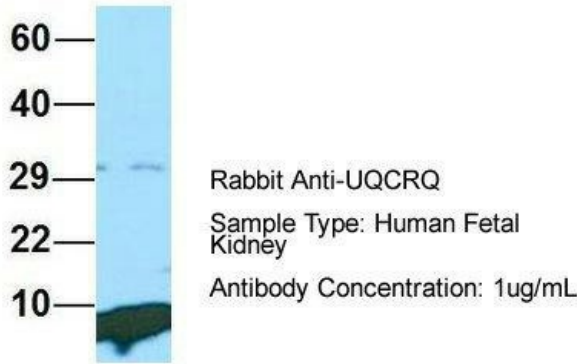
UQCRQ



Rabbit Anti-UQCRQ
 Sample Type: Human Adult Placenta
 Antibody Concentration: 1ug/mL

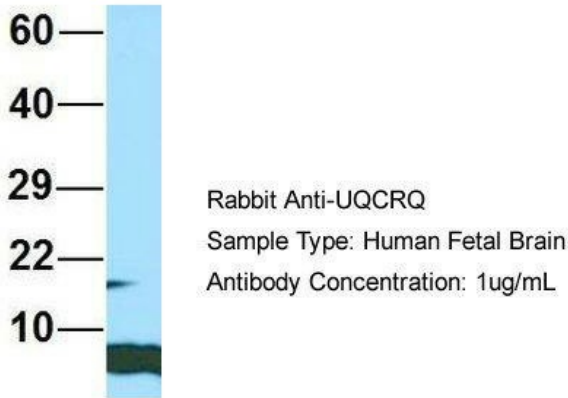
Host: Rabbit; Target Name: UQCRQ; Sample Tissue: Human Adult Placenta; Antibody Dilution: 1.0 ug/ml

UQCRQ



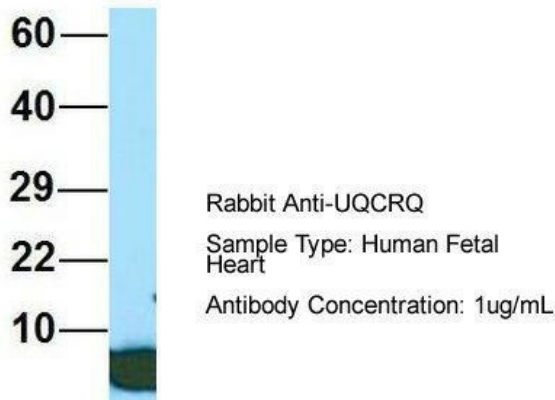
Host: Rabbit; Target Name: UQCRQ; Sample Tissue: Human MCF7; Antibody Dilution: 1.0 ug/ml; UQCRQ is supported by BioGPS gene expression data to be expressed in MCF7

UQCRQ



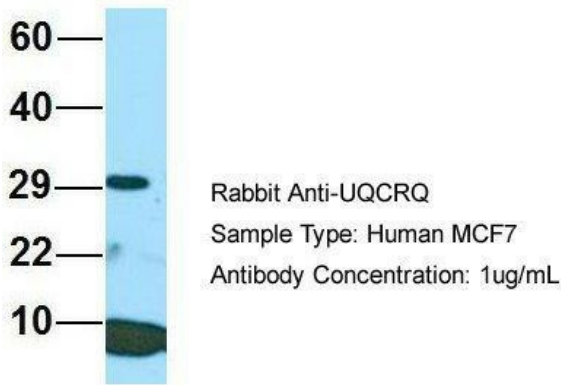
Host: Rabbit; Target Name: UQCRQ; Sample Tissue: Human 721_B; Antibody Dilution: 1.0 ug/ml; UQCRQ is supported by BioGPS gene expression data to be expressed in 721_B

UQCRQ



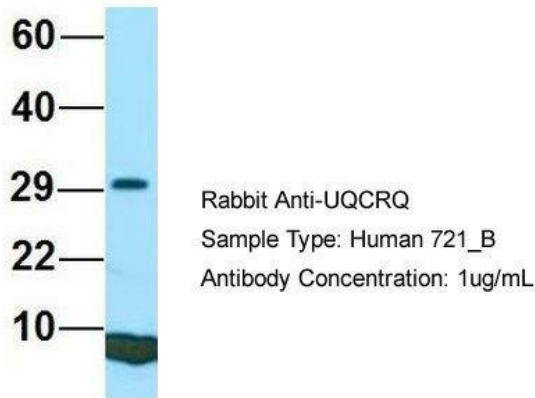
Host: Rabbit; Target Name: UQCRQ; Sample Tissue: Human HeLa; Antibody Dilution: 1.0 ug/ml; UQCRQ is supported by BioGPS gene expression data to be expressed in HeLa

UQCRQ



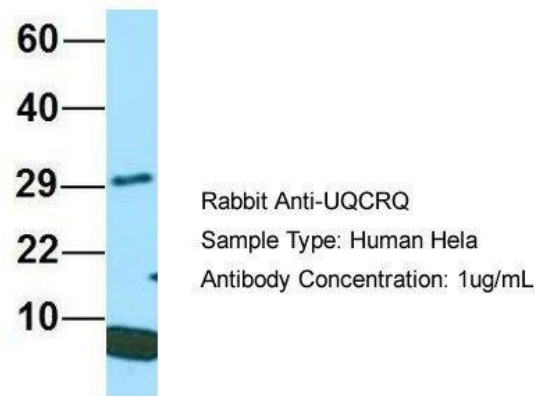
Host: Rabbit; Target Name: UQCRQ; Sample Tissue: Human Fetal Kidney; Antibody Dilution: 1.0 ug/ml

UQCRQ



Host: Rabbit; Target Name: UQCRQ; Sample Tissue: Human Fetal Brain; Antibody Dilution: 1.0 ug/ml

UQCRQ



Host: Rabbit; Target Name: UQCRQ; Sample Tissue: Human Fetal Heart; Antibody Dilution: 1.0 ug/ml