

Product datasheet for **TA334393**

SLC35G2 Rabbit Polyclonal Antibody

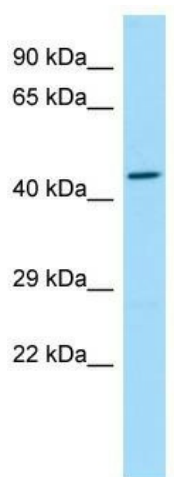
Product data:

Product Type:	Primary Antibodies
Applications:	WB
Recommended Dilution:	WB
Reactivity:	Human
Host:	Rabbit
Isotype:	IgG
Clonality:	Polyclonal
Immunogen:	The immunogen for anti-SLC35G2 antibody is: synthetic peptide directed towards the C-terminal region of Human SLC35G2. Synthetic peptide located within the following region: LQLLVLFHIFPSIYDVFGGVIIIMISVFLAGYKLYWRNLRKQDYQEILDSP
Formulation:	Liquid. Purified antibody supplied in 1x PBS buffer with 0.09% (w/v) sodium azide and 2% sucrose. <i>Note that this product is shipped as lyophilized powder to China customers.</i>
Purification:	Affinity Purified
Conjugation:	Unconjugated
Storage:	Store at -20°C as received.
Stability:	Stable for 12 months from date of receipt.
Predicted Protein Size:	45 kDa
Gene Name:	solute carrier family 35 member G2
Database Link:	NP_079522 Entrez Gene 80723 Human Q8TBE7
Background:	The function of this protein remains unknown.
Synonyms:	TMEM22
Note:	Immunogen Sequence Homology: Human: 100%; Dog: 93%; Pig: 93%; Rat: 93%; Horse: 93%; Bovine: 93%; Guinea pig: 93%; Mouse: 79%; Zebrafish: 79%
Protein Families:	Transmembrane



[View online »](#)

Product images:



WB Suggested Anti-SLC35G2 Antibody; Titration:
1.0 ug/ml; Positive Control: Fetal Heart