

## Product datasheet for **TA334392**

### Thimet Oligopeptidase (THOP1) Rabbit Polyclonal Antibody

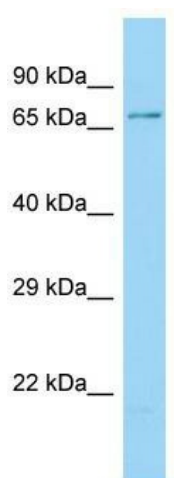
#### Product data:

Product Type:	Primary Antibodies
Applications:	WB
Recommended Dilution:	WB
Reactivity:	Human
Host:	Rabbit
Isotype:	IgG
Clonality:	Polyclonal
Immunogen:	The immunogen for anti-THOP1 antibody is: synthetic peptide directed towards the C-terminal region of Human THOP1. Synthetic peptide located within the following region: MDYRSCILRPGGSEDASAMLRRLGRDPKQDAFLLSKGLQVGGCEPEPQV
Formulation:	Liquid. Purified antibody supplied in 1x PBS buffer with 0.09% (w/v) sodium azide and 2% sucrose. <i>Note that this product is shipped as lyophilized powder to China customers.</i>
Purification:	Affinity Purified
Conjugation:	Unconjugated
Storage:	Store at -20°C as received.
Stability:	Stable for 12 months from date of receipt.
Predicted Protein Size:	76 kDa
Gene Name:	thimet oligopeptidase 1
Database Link:	<a href="#">NP_003240</a> <a href="#">Entrez Gene 7064 Human</a> <a href="#">P52888</a>
Background:	The function of this protein remains unknown.
Synonyms:	EP24.15; MEPD_HUMAN; MP78; TOP
Note:	Immunogen Sequence Homology: Human: 100%
Protein Families:	Druggable Genome, Protease
Protein Pathways:	Renin-angiotensin system



[View online »](#)

## Product images:



Host: Rabbit; Target Name: THOP1; Sample Tissue: HeLa Whole Cell lysates; Antibody Dilution: 1.0 ug/ml; THOP1 is supported by BioGPS gene expression data to be expressed in HeLa