

Product datasheet for TA334390

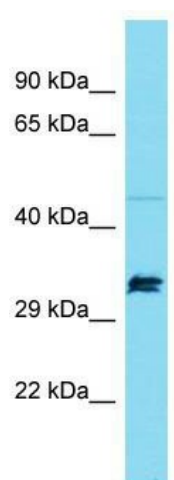
Supt7l Rabbit Polyclonal Antibody

Product data:

Product Type:	Primary Antibodies
Applications:	WB
Recommended Dilution:	WB
Reactivity:	Mouse
Host:	Rabbit
Isotype:	IgG
Clonality:	Polyclonal
Immunogen:	The immunogen for anti-Supt7l antibody is: synthetic peptide directed towards the middle region of Mouse Supt7l. Synthetic peptide located within the following region: LDIPSEPCSLTIHTIQLIQHNRRRLSLIATAQTQSQQQTGVKAESEPL
Formulation:	Liquid. Purified antibody supplied in 1x PBS buffer with 0.09% (w/v) sodium azide and 2% sucrose.
Purification:	Affinity Purified
Conjugation:	Unconjugated
Storage:	Store at -20°C as received.
Stability:	Stable for 12 months from date of receipt.
Predicted Protein Size:	45 kDa
Gene Name:	suppressor of Ty 7-like
Database Link:	NP_082426 Entrez Gene 72195 Mouse Q9CZV5
Background:	The function of this protein remains unknown.
Synonyms:	gamma; KIAA0764; MGC90306; OTTHUMP00000200854; SPT7L; STAF65; STAF65(gamma); STAF65G; STAF65gamma; SUPT7H
Note:	Immunogen Sequence Homology: Dog: 100%; Pig: 100%; Horse: 100%; Human: 100%; Rabbit: 100%; Guinea pig: 100%; Rat: 93%; Bovine: 93%; Mouse: 92%


[View online »](#)

Product images:



Host: Rabbit; Target Name: Supt7l; Sample
Tissue: Mouse Thymus lysates; Antibody Dilution:
1.0 ug/ml