

Product datasheet for **TA334389**

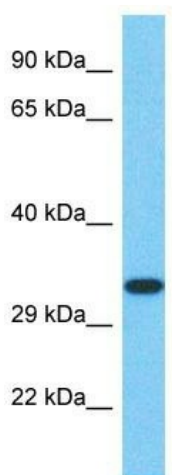
STAF65 gamma (SUPT7L) Rabbit Polyclonal Antibody

Product data:

Product Type:	Primary Antibodies
Applications:	WB
Recommended Dilution:	WB
Reactivity:	Human
Host:	Rabbit
Isotype:	IgG
Clonality:	Polyclonal
Immunogen:	The immunogen for anti-SUPT7L antibody is: synthetic peptide directed towards the C-terminal region of Human SUPT7L. Synthetic peptide located within the following region: ASSAEVNASPLWNLAHVKMEPQESEEGNVSGHGVLGSDVFEEPMSGMSEA
Formulation:	Liquid. Purified antibody supplied in 1x PBS buffer with 0.09% (w/v) sodium azide and 2% sucrose.
Purification:	Affinity Purified
Conjugation:	Unconjugated
Storage:	Store at -20°C as received.
Stability:	Stable for 12 months from date of receipt.
Predicted Protein Size:	30 kDa
Gene Name:	SPT7-like STAGA complex gamma subunit
Database Link:	NP_055675 Entrez Gene 9913 Human O94864
Background:	The function of this protein remains unknown.
Synonyms:	SPT7L; STAF65; STAF65(gamma); STAF65G; SUPT7H
Note:	Immunogen Sequence Homology: Dog: 100%; Pig: 100%; Rat: 100%; Horse: 100%; Human: 100%; Mouse: 100%; Bovine: 100%; Rabbit: 100%; Guinea pig: 100%; Zebrafish: 86%
Protein Families:	Transcription Factors


[View online »](#)

Product images:



Host: Rabbit
Target Name: SUPT7L
Sample Tissue: HepG2 Cell Lysate
Antibody Dilution: 1.0 µg/ml

Host: Rabbit; Target Name: SUPT7L; Sample
Tissue: HepG2 Whole Cell lysates; Antibody
Dilution: 1.0 ug/ml