

Product datasheet for **TA334388**

GPR91 (SUCNR1) Rabbit Polyclonal Antibody

Product data:

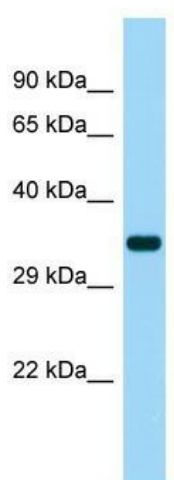
Product Type:	Primary Antibodies
Applications:	WB
Recommended Dilution:	WB
Reactivity:	Human
Host:	Rabbit
Isotype:	IgG
Clonality:	Polyclonal
Immunogen:	The immunogen for anti-SUCNR1 antibody is: synthetic peptide directed towards the middle region of Human SUCNR1. Synthetic peptide located within the following region: INPVITDNGTTCNDFASSGDPNYNLIYSMCLTLLGFLIPLFVMCFFYYKI
Formulation:	Liquid. Purified antibody supplied in 1x PBS buffer with 0.09% (w/v) sodium azide and 2% sucrose. <i>Note that this product is shipped as lyophilized powder to China customers.</i>
Purification:	Affinity Purified
Conjugation:	Unconjugated
Storage:	Store at -20°C as received.
Stability:	Stable for 12 months from date of receipt.
Predicted Protein Size:	37 kDa
Gene Name:	succinate receptor 1
Database Link:	NP_149039 Entrez Gene 56670 Human Q9BXA5
Background:	This gene encodes a G-protein-coupled receptor for succinate, an intermediate molecule of the citric acid cycle. It is involved in the promotion of hematopoietic progenitor cell development, and it has a potential role in renovascular hypertension which has known correlations to renal failure, diabetes and atherosclerosis.
Synonyms:	GPR91
Note:	Immunogen Sequence Homology: Human: 100%; Horse: 77%



[View online »](#)

Protein Families: Druggable Genome, GPCR, Transmembrane

Product images:



Host: Rabbit; Target Name: SUCNR1; Sample Tissue: Fetal Heart lysates; Antibody Dilution: 1.0 ug/ml