

Product datasheet for **TA334386**

STK35 Rabbit Polyclonal Antibody

Product data:

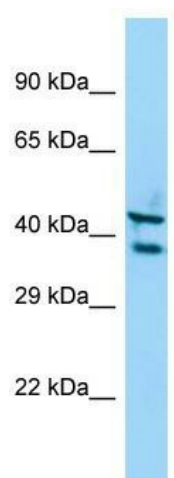
Product Type:	Primary Antibodies
Applications:	WB
Recommended Dilution:	WB
Reactivity:	Human
Host:	Rabbit
Isotype:	IgG
Clonality:	Polyclonal
Immunogen:	The immunogen for anti-STK35 antibody is: synthetic peptide directed towards the C-terminal region of Human STK35. Synthetic peptide located within the following region: LENPKMELHIPQKRRTSMSEGIKQLLKDMLAANPQDRPDAFELETRMDQV
Formulation:	Liquid. Purified antibody supplied in 1x PBS buffer with 0.09% (w/v) sodium azide and 2% sucrose. <i>Note that this product is shipped as lyophilized powder to China customers.</i>
Purification:	Affinity Purified
Conjugation:	Unconjugated
Storage:	Store at -20°C as received.
Stability:	Stable for 12 months from date of receipt.
Predicted Protein Size:	44 kDa
Gene Name:	serine/threonine kinase 35
Database Link:	NP_543026 Entrez Gene 140901 Human Q8TDR2
Background:	The protein encoded by this gene is a kinase that is predominantly found in the nucleus. However, it can interact with PDLIM1/CLP-36 in the cytoplasm and localize to actin stress fibers. The encoded protein may be a regulator of actin stress fibers in nonmuscle cells.
Synonyms:	CLIK1; STK35L1
Note:	Immunogen Sequence Homology: Dog: 100%; Pig: 100%; Rat: 100%; Horse: 100%; Human: 100%; Bovine: 100%; Rabbit: 100%; Guinea pig: 100%; Mouse: 93%



[View online »](#)

Protein Families: Druggable Genome, Protein Kinase

Product images:



Host: Rabbit; Target Name: STK35; Sample Tissue: A549 Whole Cell lysates; Antibody Dilution: 1.0 ug/ml