

Product datasheet for **TA334385**

SPINK9 Rabbit Polyclonal Antibody

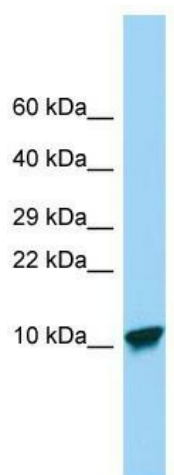
Product data:

Product Type:	Primary Antibodies
Applications:	WB
Recommended Dilution:	WB
Reactivity:	Human
Host:	Rabbit
Isotype:	IgG
Clonality:	Polyclonal
Immunogen:	The immunogen for anti-SPINK9 antibody is: synthetic peptide directed towards the middle region of Human SPINK9. Synthetic peptide located within the following region: KKLPPGQQRFCHEHMYDPICGSDGKTYKNDCCFFCSKVKKTDTGLKVFHFGK
Formulation:	Liquid. Purified antibody supplied in 1x PBS buffer with 0.09% (w/v) sodium azide and 2% sucrose.
Purification:	Affinity Purified
Conjugation:	Unconjugated
Storage:	Store at -20°C as received.
Stability:	Stable for 12 months from date of receipt.
Predicted Protein Size:	9 kDa
Gene Name:	serine peptidase inhibitor, Kazal type 9
Database Link:	NP_001035523 Entrez Gene 643394 Human Q5DT21
Background:	SPINK9 is a Serine protease inhibitor which specifically inhibits KLK5. It may contribute to the regulation of the desquamation process in skin by inhibiting KLK5.
Synonyms:	LEKT12
Note:	Immunogen Sequence Homology: Human: 100%; Zebrafish: 100%; Dog: 92%; Rabbit: 92%; Rat: 90%; Pig: 85%
Protein Families:	Transmembrane



[View online »](#)

Product images:



Host: Rabbit; Target Name: SPINK9; Sample Tissue: Placenta lysates; Antibody Dilution: 1.0 ug/ml