

Product datasheet for **TA334384**

SPATA1 Rabbit Polyclonal Antibody

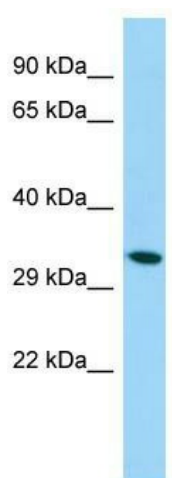
Product data:

Product Type:	Primary Antibodies
Applications:	WB
Recommended Dilution:	WB
Reactivity:	Human
Host:	Rabbit
Isotype:	IgG
Clonality:	Polyclonal
Immunogen:	The immunogen for anti-SPATA1 antibody is: synthetic peptide directed towards the middle region of Human SPATA1. Synthetic peptide located within the following region: ENTLKELPNKNQEEAGGKATAEKSQIAKNQIGNSELPGSLEDSNND CFGT
Formulation:	Liquid. Purified antibody supplied in 1x PBS buffer with 0.09% (w/v) sodium azide and 2% sucrose. <i>Note that this product is shipped as lyophilized powder to China customers.</i>
Purification:	Affinity Purified
Conjugation:	Unconjugated
Storage:	Store at -20°C as received.
Stability:	Stable for 12 months from date of receipt.
Predicted Protein Size:	36 kDa
Gene Name:	spermatogenesis associated 1
Database Link:	NP_001074941 Entrez Gene 64173 Entrez Gene 100505741 Human Q5VX52
Background:	The function of this protein remains unknown.
Synonyms:	SP-2; SPAP1; sperm-specific protein SP-2; spermatogenesis associated 1; spermatogenesis associated protein 1
Note:	Immunogen Sequence Homology: Human: 100%



[View online »](#)

Product images:



Host: Rabbit; Target Name: SPATA1; Sample
Tissue: HepG2 Whole Cell lysates; Antibody
Dilution: 1.0 ug/ml