

Product datasheet for **TA334383**

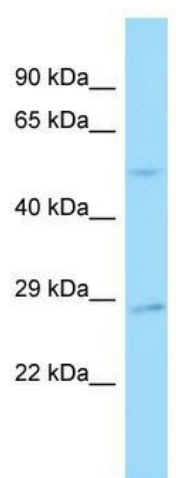
SNX30 Rabbit Polyclonal Antibody

Product data:

Product Type:	Primary Antibodies
Applications:	WB
Recommended Dilution:	WB
Reactivity:	Human
Host:	Rabbit
Isotype:	IgG
Clonality:	Polyclonal
Immunogen:	The immunogen for anti-SNX30 antibody is: synthetic peptide directed towards the C-terminal region of Human SNX30. Synthetic peptide located within the following region: YDSMKSVLKKRDQVQAEYEAKLEAVALRKEDRPKVPADVEKQCQDRMECF
Formulation:	Liquid. Purified antibody supplied in 1x PBS buffer with 0.09% (w/v) sodium azide and 2% sucrose. <i>Note that this product is shipped as lyophilized powder to China customers.</i>
Purification:	Affinity Purified
Conjugation:	Unconjugated
Storage:	Store at -20°C as received.
Stability:	Stable for 12 months from date of receipt.
Predicted Protein Size:	48 kDa
Gene Name:	sorting nexin family member 30
Database Link:	NP_001013012 Entrez Gene 401548 Human Q5VWJ9
Background:	SNX30 may be involved in several stages of intracellular trafficking.
Synonyms:	ATG24A
Note:	Immunogen Sequence Homology: Dog: 100%; Pig: 100%; Rat: 100%; Horse: 100%; Human: 100%; Rabbit: 100%; Guinea pig: 100%; Mouse: 93%; Bovine: 92%



[View online »](#)

Product images:

Host: Rabbit; Target Name: SNX30; Sample
Tissue: 721_B Whole Cell lysates; Antibody
Dilution: 1.0 ug/ml