

Product datasheet for **TA334382**

Snx30 Rabbit Polyclonal Antibody

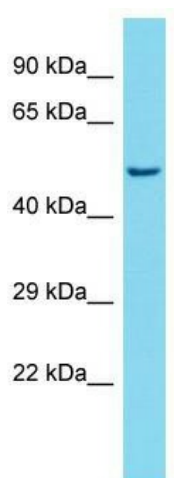
Product data:

Product Type:	Primary Antibodies
Applications:	WB
Recommended Dilution:	WB
Reactivity:	Mouse
Host:	Rabbit
Isotype:	IgG
Clonality:	Polyclonal
Immunogen:	The immunogen for anti-Snx30 antibody is: synthetic peptide directed towards the middle region of Mouse Snx30. Synthetic peptide located within the following region: VSACIGNCSTALEELTDDITEEFLPVLREYVLYSDSMKGVLLKRDQVQAE
Formulation:	Liquid. Purified antibody supplied in 1x PBS buffer with 0.09% (w/v) sodium azide and 2% sucrose. <i>Note that this product is shipped as lyophilized powder to China customers.</i>
Purification:	Affinity Purified
Conjugation:	Unconjugated
Storage:	Store at -20°C as received.
Stability:	Stable for 12 months from date of receipt.
Predicted Protein Size:	49 kDa
Gene Name:	sorting nexin family member 30
Database Link:	NP_766056 Entrez Gene 209131 Mouse Q8CE50
Background:	Snx30 may be involved in several stages of intracellular trafficking.
Synonyms:	FLJ26481; FLJ34280; FLJ35589; FLJ44686; FLJ45069; FLJ46877
Note:	Immunogen Sequence Homology: Dog: 100%; Pig: 100%; Rat: 100%; Horse: 100%; Human: 100%; Bovine: 100%; Rabbit: 100%; Guinea pig: 100%; Mouse: 93%; Zebrafish: 93%



[View online »](#)

Product images:



Host: Rabbit; Target Name: Snx30; Sample
Tissue: Mouse Heart lysates; Antibody Dilution:
1.0 ug/ml