

Product datasheet for **TA334381**

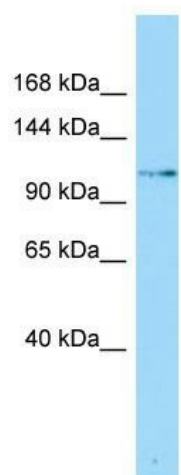
SLFN5 Rabbit Polyclonal Antibody

Product data:

Product Type:	Primary Antibodies
Applications:	WB
Recommended Dilution:	WB
Reactivity:	Human
Host:	Rabbit
Isotype:	IgG
Clonality:	Polyclonal
Immunogen:	The immunogen for anti-SLFN5 antibody is: synthetic peptide directed towards the N-terminal region of Human SLFN5. Synthetic peptide located within the following region: VDAGKVTLGTTQQRQEMDPRLEKQNEIILRAVCALLNSGGGIKAEIENK
Formulation:	Liquid. Purified antibody supplied in 1x PBS buffer with 0.09% (w/v) sodium azide and 2% sucrose. <i>Note that this product is shipped as lyophilized powder to China customers.</i>
Purification:	Affinity Purified
Conjugation:	Unconjugated
Storage:	Store at -20°C as received.
Stability:	Stable for 12 months from date of receipt.
Predicted Protein Size:	98 kDa
Gene Name:	schlafen family member 5
Database Link:	NP_659412 Entrez Gene 162394 Human Q08AF3
Background:	SLFN5 may have a role in hematopoietic cell differentiation.
Synonyms:	MGC19764; MGC150611; MGC150612
Note:	Immunogen Sequence Homology: Human: 100%



[View online »](#)

Product images:

Host: Rabbit; Target Name: SLFN5; Sample
Tissue: Fetal Heart lysates; Antibody Dilution: 1.0
ug/ml