

Product datasheet for TA334380

SCAP2 (SKAP2) Rabbit Polyclonal Antibody

Product data:

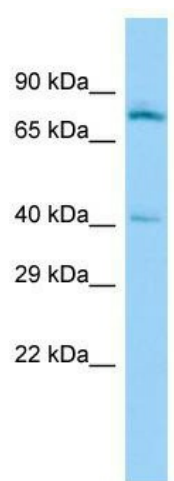
Product Type:	Primary Antibodies
Applications:	WB
Recommended Dilution:	WB
Reactivity:	Human
Host:	Rabbit
Isotype:	IgG
Clonality:	Polyclonal
Immunogen:	The immunogen for anti-SKAP2 antibody is: synthetic peptide directed towards the middle region of Human SKAP2. Synthetic peptide located within the following region: FEWQKRWCALSKTVFYYGSDKDKQQKGEFAIDGYSVRMNNTLRKDGKKD
Formulation:	Liquid. Purified antibody supplied in 1x PBS buffer with 0.09% (w/v) sodium azide and 2% sucrose. <i>Note that this product is shipped as lyophilized powder to China customers.</i>
Purification:	Affinity Purified
Conjugation:	Unconjugated
Storage:	Store at -20°C as received.
Stability:	Stable for 12 months from date of receipt.
Predicted Protein Size:	39 kDa
Gene Name:	src kinase associated phosphoprotein 2
Database Link:	NP_003921 Entrez Gene 8935 Human O75563
Background:	The protein encoded by this gene belongs to the src family kinases. This protein is similar to the src kinase associated phosphoprotein 1. It is an adaptor protein that is thought to play an essential role in the src signaling pathway in various cells. It inhibits PTK2B/RAFTK activity and regulates alpha-synuclein phosphorylation.
Synonyms:	PRAP; RA70; SAPS; SCAP2; SKAP-HOM; SKAP55R



[View online »](#)

Note: Immunogen Sequence Homology: Dog: 100%; Pig: 100%; Rat: 100%; Horse: 100%; Human: 100%; Mouse: 100%; Bovine: 100%; Rabbit: 100%; Zebrafish: 93%; Guinea pig: 93%

Product images:



Host: Rabbit; Target Name: SKAP2; Sample Tissue: PANC1 Whole Cell lysates; Antibody Dilution: 1.0 ug/ml