

Product datasheet for **TA334379**

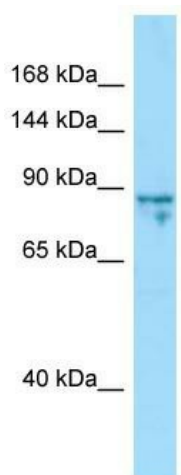
SHROOM1 Rabbit Polyclonal Antibody

Product data:

Product Type:	Primary Antibodies
Applications:	WB
Recommended Dilution:	WB
Reactivity:	Human
Host:	Rabbit
Isotype:	IgG
Clonality:	Polyclonal
Immunogen:	The immunogen for anti-SHROOM1 antibody is: synthetic peptide directed towards the C-terminal region of Human SHROOM1. Synthetic peptide located within the following region: LLPAPREETRLNPATHPVLDQPCGQGLPAPNNSIQGKKVELAARLQKML
Formulation:	Liquid. Purified antibody supplied in 1x PBS buffer with 0.09% (w/v) sodium azide and 2% sucrose.
Purification:	Affinity Purified
Conjugation:	Unconjugated
Storage:	Store at -20°C as received.
Stability:	Stable for 12 months from date of receipt.
Predicted Protein Size:	86 kDa
Gene Name:	shroom family member 1
Database Link:	NP_597713 Entrez Gene 134549 Human Q2M3G4
Background:	The function of this protein remains unknown.
Synonyms:	APXL2
Note:	Immunogen Sequence Homology: Human: 100%
Protein Families:	Druggable Genome



[View online »](#)

Product images:


Host: Rabbit

Target Name: SHROOM1

Sample Tissue: Jurkat Cell Lysate

Antibody Dilution: 1.0 µg/ml

Host: Rabbit; Target Name: SHROOM1; Sample Tissue: Jurkat Whole Cell lysates; Antibody Dilution: 1.0 ug/ml