

Product datasheet for **TA334378**

SH3D19 Rabbit Polyclonal Antibody

Product data:

Product Type:	Primary Antibodies
Applications:	WB
Recommended Dilution:	WB
Reactivity:	Human
Host:	Rabbit
Isotype:	IgG
Clonality:	Polyclonal
Immunogen:	The immunogen for anti-SH3D19 antibody is: synthetic peptide directed towards the C-terminal region of Human SH3D19. Synthetic peptide located within the following region: GRVHLSQMKIITPLDEHLRSRPNDPSHAQKPVDSGAPHAVLHDFPAEQV
Formulation:	Liquid. Purified antibody supplied in 1x PBS buffer with 0.09% (w/v) sodium azide and 2% sucrose. <i>Note that this product is shipped as lyophilized powder to China customers.</i>
Purification:	Affinity Purified
Conjugation:	Unconjugated
Storage:	Store at -20°C as received.
Stability:	Stable for 12 months from date of receipt.
Predicted Protein Size:	46 kDa
Gene Name:	SH3 domain containing 19
Database Link:	NP_001009555 Entrez Gene 152503 Human Q5HYK7
Background:	This gene encodes a multiple SH3 domain-containing protein, which interacts with other proteins, such as EBP and members of ADAM family, via the SH3 domains. This protein may be involved in suppression of Ras-induced cellular transformation and Ras-mediated activation of ELK1 by EBP, and regulation of ADAM proteins in the signaling of EGFR-ligand shedding. Alternatively spliced transcript variants encoding different isoforms have been found for this gene.

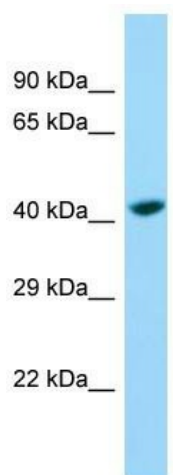


[View online »](#)

Synonyms: EBP; EVE1; Kryn; SH3P19

Note: Immunogen Sequence Homology: Human: 100%; Dog: 93%; Pig: 93%; Horse: 93%; Rabbit: 92%; Guinea pig: 86%; Bovine: 85%; Rat: 79%

Product images:



Host: Rabbit

Target Name: SH3D19

Sample Tissue: Jurkat Cell Lysate

Antibody Dilution: 1.0 µg/ml

Host: Rabbit; Target Name: SH3D19; Sample Tissue: Jurkat Whole Cell lysates; Antibody Dilution: 1.0 ug/ml; SH3D19 is supported by BioGPS gene expression data to be expressed in Jurkat