

Product datasheet for **TA334376**

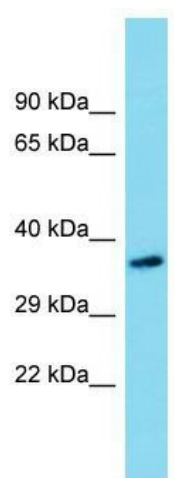
Sfxn5 Rabbit Polyclonal Antibody

Product data:

Product Type:	Primary Antibodies
Applications:	WB
Recommended Dilution:	WB
Reactivity:	Rat
Host:	Rabbit
Isotype:	IgG
Clonality:	Polyclonal
Immunogen:	The immunogen for anti-Sfxn5 antibody is: synthetic peptide directed towards the N-terminal region of Rat Sfxn5. Synthetic peptide located within the following region: NEQLWSAQKIKQAILHPDTNEKIFMPFRMSGYIPFGTPIVVGLLLPNQTL
Formulation:	Liquid. Purified antibody supplied in 1x PBS buffer with 0.09% (w/v) sodium azide and 2% sucrose. <i>Note that this product is shipped as lyophilized powder to China customers.</i>
Purification:	Affinity Purified
Conjugation:	Unconjugated
Storage:	Store at -20°C as received.
Stability:	Stable for 12 months from date of receipt.
Predicted Protein Size:	37 kDa
Gene Name:	sideroflexin 5
Database Link:	NP_695210 Entrez Gene 261737 Rat Q8CFD0
Background:	Sfxn5 is a mitochondrial tricarboxylate carrier protein that has citrate transport activity.
Synonyms:	BBG-TCC; MGC120413; MGC120415
Note:	Immunogen Sequence Homology: Dog: 100%; Pig: 100%; Rat: 100%; Horse: 100%; Human: 100%; Mouse: 100%; Bovine: 100%; Rabbit: 100%; Guinea pig: 100%; Zebrafish: 86%



[View online »](#)

Product images:

Host: Rabbit; Target Name: Sfxn5; Sample Tissue:
Rat Brain lysates; Antibody Dilution: 1.0 ug/ml