

## Product datasheet for **TA334373**

### SCAMP4 Rabbit Polyclonal Antibody

#### Product data:

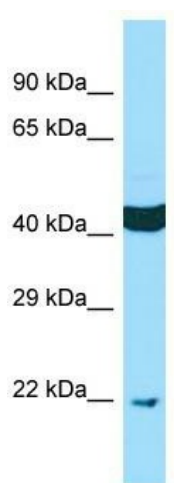
Product Type:	Primary Antibodies
Applications:	WB
Recommended Dilution:	WB
Reactivity:	Human
Host:	Rabbit
Isotype:	IgG
Clonality:	Polyclonal
Immunogen:	The immunogen for anti-SCAMP4 antibody is: synthetic peptide directed towards the N-terminal region of Human SCAMP4. Synthetic peptide located within the following region: YRLWMFYCATLGVNLIACLAWWIGGGSGTNFGLAFVWLLFTPCGYVCWF
Formulation:	Liquid. Purified antibody supplied in 1x PBS buffer with 0.09% (w/v) sodium azide and 2% sucrose.
Purification:	Affinity Purified
Conjugation:	Unconjugated
Storage:	Store at -20°C as received.
Stability:	Stable for 12 months from date of receipt.
Predicted Protein Size:	21 kDa
Gene Name:	secretory carrier membrane protein 4
Database Link:	<a href="#">NP_524558</a> <a href="#">Entrez Gene 113178 Human</a> <a href="#">Q969E2</a>
Background:	Secretory carrier membrane proteins (SCAMPs) are widely distributed integral membrane proteins implicated in membrane trafficking. Most SCAMPs have N-terminal cytoplasmic NPF (arg-pro-phe) repeats, 4 central transmembrane regions, and a short C-terminal cytoplasmic tail. These SCAMPs likely have a role in endocytosis that is mediated by their NPF repeats. Other SCAMPs, such as SCAMP4, lack the NPF repeats and are therefore unlikely to function in endocytosis.
Synonyms:	SCAMP-4



[View online »](#)

**Note:** Immunogen Sequence Homology: Human: 100%; Pig: 93%; Guinea pig: 93%; Dog: 86%; Horse: 86%; Rat: 85%; Mouse: 85%; Bovine: 85%; Rabbit: 85%

### Product images:



WB Suggested Anti-SCAMP4 Antibody; Titration:  
1.0 ug/ml; Positive Control: MCF7 Whole Cell