

Product datasheet for **TA334372**

SCAMP4 Rabbit Polyclonal Antibody

Product data:

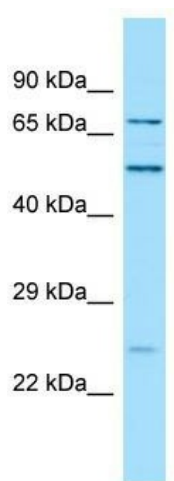
Product Type:	Primary Antibodies
Applications:	WB
Recommended Dilution:	WB
Reactivity:	Human
Host:	Rabbit
Isotype:	IgG
Clonality:	Polyclonal
Immunogen:	The immunogen for anti-SCAMP4 antibody is: synthetic peptide directed towards the C-terminal region of Human SCAMP4. Synthetic peptide located within the following region: RGAGGSFQKAQTEWNTGTWRNPPSREAQYNNFSGNSLPEYPTVPSYPGSG
Formulation:	Liquid. Purified antibody supplied in 1x PBS buffer with 0.09% (w/v) sodium azide and 2% sucrose.
Purification:	Affinity Purified
Conjugation:	Unconjugated
Storage:	Store at -20°C as received.
Stability:	Stable for 12 months from date of receipt.
Predicted Protein Size:	25 kDa
Gene Name:	secretory carrier membrane protein 4
Database Link:	NP_524558 Entrez Gene 113178 Human Q969E2
Background:	Secretory carrier membrane proteins (SCAMPs) are widely distributed integral membrane proteins implicated in membrane trafficking. Most SCAMPs have N-terminal cytoplasmic NPF (arg-pro-phe) repeats, 4 central transmembrane regions, and a short C-terminal cytoplasmic tail. These SCAMPs likely have a role in endocytosis that is mediated by their NPF repeats. Other SCAMPs, such as SCAMP4, lack the NPF repeats and are therefore unlikely to function in endocytosis.
Synonyms:	SCAMP-4



[View online »](#)

Note: Immunogen Sequence Homology: Dog: 100%; Pig: 100%; Horse: 100%; Human: 100%; Bovine: 93%; Rat: 86%; Mouse: 86%; Guinea pig: 86%

Product images:



WB Suggested Anti-SCAMP4 Antibody; Titration: 1.0 ug/ml; Positive Control: Hela Whole Cell