

## Product datasheet for **TA334371**

### **SAMD3 Rabbit Polyclonal Antibody**

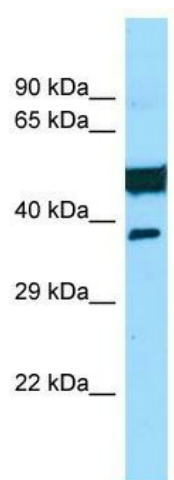
#### **Product data:**

Product Type:	Primary Antibodies
Applications:	WB
Recommended Dilution:	WB
Reactivity:	Human
Host:	Rabbit
Isotype:	IgG
Clonality:	Polyclonal
Immunogen:	The immunogen for anti-SAMD3 antibody is: synthetic peptide directed towards the C-terminal region of Human SAMD3. Synthetic peptide located within the following region: ALVAAFHVFRIECPRRLSQTFNFLETLIFDMHSPYFPSLKEKENEVGFQH
Formulation:	Liquid. Purified antibody supplied in 1x PBS buffer with 0.09% (w/v) sodium azide and 2% sucrose. <i>Note that this product is shipped as lyophilized powder to China customers.</i>
Purification:	Affinity Purified
Conjugation:	Unconjugated
Storage:	Store at -20°C as received.
Stability:	Stable for 12 months from date of receipt.
Predicted Protein Size:	57 kDa
Gene Name:	sterile alpha motif domain containing 3
Database Link:	<a href="#">NP_001017373</a> <a href="#">Entrez Gene 154075 Human</a> <a href="#">Q8N6K7</a>
Background:	The function of this protein remains unknown.
Synonyms:	FLJ34563; MGC35163
Note:	Immunogen Sequence Homology: Human: 100%; Rabbit: 86%; Bovine: 79%



[View online »](#)

## Product images:



WB Suggested Anti-SAMD3 Antibody; Titration:  
1.0 ug/ml; Positive Control: Hela Whole Cell