

Product datasheet for TA334370

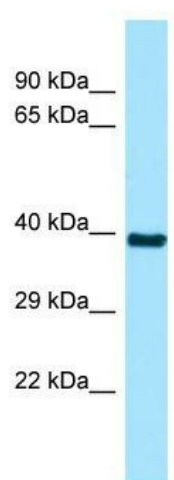
C6orf206 (RSPH9) Rabbit Polyclonal Antibody

Product data:

Product Type:	Primary Antibodies
Applications:	WB
Recommended Dilution:	WB
Reactivity:	Human
Host:	Rabbit
Isotype:	IgG
Clonality:	Polyclonal
Immunogen:	The immunogen for anti-RSPH9 antibody is: synthetic peptide directed towards the N-terminal region of Human RSPH9. Synthetic peptide located within the following region: GLVADYYIAQGLSEDQLAPRKTLYSLNCTEWSLLPPATEEMVAQSSVVKG
Formulation:	Liquid. Purified antibody supplied in 1x PBS buffer with 0.09% (w/v) sodium azide and 2% sucrose.
Purification:	Affinity Purified
Conjugation:	Unconjugated
Storage:	Store at -20°C as received.
Stability:	Stable for 12 months from date of receipt.
Predicted Protein Size:	33 kDa
Gene Name:	radial spoke head 9 homolog
Database Link:	NP_001180270 Entrez Gene 221421 Human Q9H1X1
Background:	This gene encodes a protein thought to be a component of the radial spoke head in motile cilia and flagella. Mutations in this gene are associated with primary ciliary dyskinesia 12. Alternative splicing results in multiple transcript variants.
Synonyms:	C6orf206; CILD12; MRPS18AL1
Note:	Immunogen Sequence Homology: Pig: 100%; Rat: 100%; Human: 100%; Mouse: 100%; Bovine: 93%; Rabbit: 93%; Guinea pig: 93%


[View online »](#)

Product images:



WB Suggested Anti-RSPH9 Antibody; Titration: 1.0 ug/ml; Positive Control: 721_B Whole Cell