

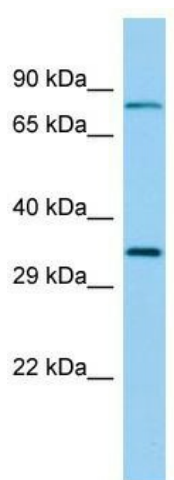
## Product datasheet for TA334369

### C6orf206 (RSPH9) Rabbit Polyclonal Antibody

#### Product data:

Product Type:	Primary Antibodies
Applications:	WB
Recommended Dilution:	WB
Reactivity:	Human
Host:	Rabbit
Isotype:	IgG
Clonality:	Polyclonal
Immunogen:	The immunogen for anti-RSPH9 antibody is: synthetic peptide directed towards the middle region of Human RSPH9. Synthetic peptide located within the following region: VKGRFMGDPSYEYETELQVNEGEKVFEEIIVVQIKEETRLVSVIDQID
Formulation:	Liquid. Purified antibody supplied in 1x PBS buffer with 0.09% (w/v) sodium azide and 2% sucrose.
Purification:	Affinity Purified
Conjugation:	Unconjugated
Storage:	Store at -20°C as received.
Stability:	Stable for 12 months from date of receipt.
Predicted Protein Size:	30 kDa
Gene Name:	radial spoke head 9 homolog
Database Link:	<a href="#">NP_689945</a> <a href="#">Entrez Gene 221421 Human</a> <a href="#">Q9H1X1</a>
Background:	This gene encodes a protein thought to be a component of the radial spoke head in motile cilia and flagella. Mutations in this gene are associated with primary ciliary dyskinesia 12. Alternative splicing results in multiple transcript variants.
Synonyms:	C6orf206; CILD12; MRPS18AL1
Note:	Immunogen Sequence Homology: Pig: 100%; Human: 100%; Bovine: 100%; Mouse: 93%; Dog: 86%; Horse: 86%; Rat: 79%; Rabbit: 79%


[View online »](#)

**Product images:**

Host: Rabbit; Target Name: RSPH9; Sample  
Tissue: Fetal Lung lysates; Antibody Dilution: 1.0  
ug/ml