

## Product datasheet for **TA334368**

### Cplane2 Rabbit Polyclonal Antibody

#### Product data:

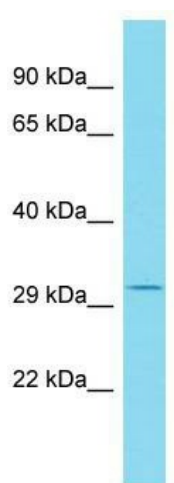
Product Type:	Primary Antibodies
Applications:	WB
Recommended Dilution:	WB
Reactivity:	Mouse
Host:	Rabbit
Isotype:	IgG
Clonality:	Polyclonal
Immunogen:	The immunogen for anti-6330545A04Rik antibody is: synthetic peptide directed towards the N-terminal region of Mouse 6330545A04Rik. Synthetic peptide located within the following region: NRRREFGLLERPVLPPSVVIDTASYKIFVSGKSGVGKTALVAKLAGLEVP
Formulation:	Liquid. Purified antibody supplied in 1x PBS buffer with 0.09% (w/v) sodium azide and 2% sucrose.
Purification:	Affinity Purified
Conjugation:	Unconjugated
Storage:	Store at -20°C as received.
Stability:	Stable for 12 months from date of receipt.
Predicted Protein Size:	28 kDa
Gene Name:	REM2 and RAB-like small GTPase 1
Database Link:	<a href="#">NP_001074643</a> <a href="#">Entrez Gene 76166 Mouse</a> <a href="#">A2A825</a>
Background:	6330545A04Rik has a potential effector of the planar cell polarity signaling pathway. It plays a role in targeted membrane trafficking most probably at the level of vesicle fusion with membranes. It is involved in cilium biogenesis by regulating the transport of cargo proteins to the basal body and to the apical tips of cilia and is more generally involved in exocytosis in secretory cells.
Synonyms:	C1orf89; RP4-733M16.4



[View online »](#)

**Note:** Immunogen Sequence Homology: Pig: 100%; Rat: 100%; Horse: 100%; Human: 100%; Mouse: 100%; Bovine: 100%; Dog: 93%; Rabbit: 93%; Guinea pig: 93%; Yeast: 83%; Zebrafish: 83%

### Product images:



Host: Rabbit; Target Name: 6330545A04Rik;  
Sample Tissue: Mouse Spleen lysates; Antibody  
Dilution: 1.0 ug/ml