

## Product datasheet for **TA334367**

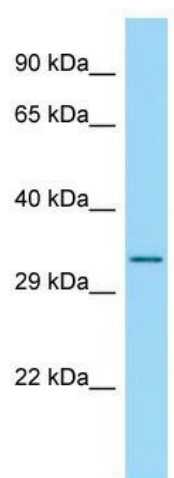
### RPS4Y2 Rabbit Polyclonal Antibody

#### Product data:

Product Type:	Primary Antibodies
Applications:	WB
Recommended Dilution:	WB
Reactivity:	Human
Host:	Rabbit
Isotype:	IgG
Clonality:	Polyclonal
Immunogen:	The immunogen for anti-RPS4Y2 antibody is: synthetic peptide directed towards the C-terminal region of Human RPS4Y2. Synthetic peptide located within the following region: TGKITSFIKFDGTGNVCMVIAGANLGRVGVITNRERHPGSCDWHVKDANG
Formulation:	Liquid. Purified antibody supplied in 1x PBS buffer with 0.09% (w/v) sodium azide and 2% sucrose. <i>Note that this product is shipped as lyophilized powder to China customers.</i>
Purification:	Affinity Purified
Conjugation:	Unconjugated
Storage:	Store at -20°C as received.
Stability:	Stable for 12 months from date of receipt.
Predicted Protein Size:	29 kDa
Gene Name:	ribosomal protein S4, Y-linked 2
Database Link:	<a href="#">NP_001034656</a> <a href="#">Entrez Gene 140032 Human</a> <a href="#">Q8TD47</a>
Background:	The function of this protein remains unknown.
Synonyms:	RPS4Y2P
Note:	Immunogen Sequence Homology: Dog: 100%; Pig: 100%; Rat: 100%; Goat: 100%; Horse: 100%; Human: 100%; Mouse: 100%; Bovine: 100%; Rabbit: 100%; Guinea pig: 100%; Zebrafish: 92%



[View online »](#)

**Product images:**

Host: Rabbit; Target Name: RPS4Y2; Sample  
Tissue: 293T Whole Cell lysates; Antibody  
Dilution: 1.0 ug/ml