

Product datasheet for **TA334362**

RINL Rabbit Polyclonal Antibody

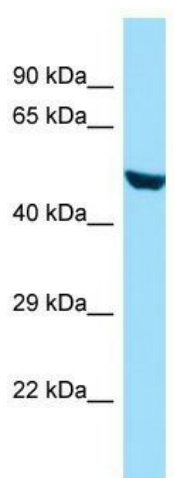
Product data:

Product Type:	Primary Antibodies
Applications:	IP, WB
Recommended Dilution:	IP, WB
Reactivity:	Human
Host:	Rabbit
Isotype:	IgG
Clonality:	Polyclonal
Immunogen:	The immunogen for anti-RINL antibody is: synthetic peptide directed towards the N-terminal region of Human RINL. Synthetic peptide located within the following region: ETHRGWGREQTPQETEPEAAQRHDPAPRNPAPHGVSWSVWGKPLSPEVDHPG
Formulation:	Liquid. Purified antibody supplied in 1x PBS buffer with 0.09% (w/v) sodium azide and 2% sucrose.
Purification:	Affinity Purified
Conjugation:	Unconjugated
Storage:	Store at -20°C as received.
Stability:	Stable for 12 months from date of receipt.
Predicted Protein Size:	50 kDa
Gene Name:	Ras and Rab interactor like
Database Link:	NP_940847 Entrez Gene 126432 Human Q6ZS11
Background:	The function of this protein remains unknown.
Synonyms:	FLJ44131; FLJ45909
Note:	Immunogen Sequence Homology: Human: 100%

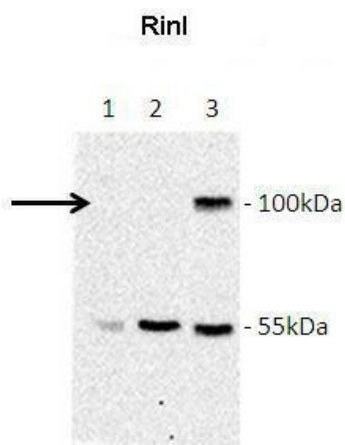


[View online »](#)

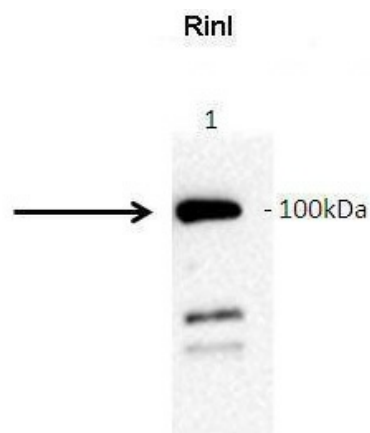
Product images:



WB Suggested Anti-RINL Antibody; Titration: 1.0 ug/ml; Positive Control: HepG2 Whole Cell



Lanes: Lane 1: Jurkat lysate; Lane 2: HeLa lysate; Lane 3: GFP-Rinl transfected COS7 lysate; Primary Antibody Dilution: 1:1000; Secondary Antibody: Goat anti-rabbit-HRP; Secondary Antibody Dilution: 1:5000; Gene Name: RINL; Submitted by: Barbara Woller; M



Amount and Sample Type : GFP-hRinl transfected COS7 cell lysate; Amount of IP Antibody : 10ug; Primary Antibody : anti-GFP; Primary Antibody Dilution : 1:1000; Secondary Antibody : Goat anti-rabbit-HRP; Secondary Antibody Dilution : 1:5000; Gene Name : RI