

Product datasheet for TA334361

RASAL2 Rabbit Polyclonal Antibody

Product data:

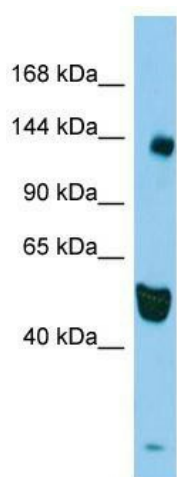
Product Type:	Primary Antibodies
Applications:	WB
Recommended Dilution:	WB
Reactivity:	Human
Host:	Rabbit
Isotype:	IgG
Clonality:	Polyclonal
Immunogen:	The immunogen for anti-RASAL2 antibody is: synthetic peptide directed towards the N-terminal region of Human RASAL2. Synthetic peptide located within the following region: IPVEGGQEQQTDSTKGRCLRRTVSVPESEGQFPEYPPPEGATKLEVP AERSP
Formulation:	Liquid. Purified antibody supplied in 1x PBS buffer with 0.09% (w/v) sodium azide and 2% sucrose. <i>Note that this product is shipped as lyophilized powder to China customers.</i>
Purification:	Affinity Purified
Conjugation:	Unconjugated
Storage:	Store at -20°C as received.
Stability:	Stable for 12 months from date of receipt.
Predicted Protein Size:	143 kDa
Gene Name:	RAS protein activator like 2
Database Link:	NP_733793 Entrez Gene 9462 Human Q9UJF2
Background:	This gene encodes a protein that contains the GAP-related domain (GRD), a characteristic domain of GTPase-activating proteins (GAPs). GAPs function as activators of Ras superfamily of small GTPases. The protein encoded by this gene is able to complement the defective RasGAP function in a yeast system. Two alternatively spliced transcript variants of this gene encoding distinct isoforms have been reported.
Synonyms:	NGAP



[View online »](#)

Note: Immunogen Sequence Homology: Dog: 100%; Pig: 100%; Rat: 100%; Horse: 100%; Human: 100%; Guinea pig: 100%; Mouse: 92%

Product images:



Host: Rabbit; Target Name: RASAL2; Sample Tissue: HepG2 Whole Cell lysates; Antibody Dilution: 1.0 ug/ml