

Product datasheet for **TA334360**

RAB19B (RAB19) Rabbit Polyclonal Antibody

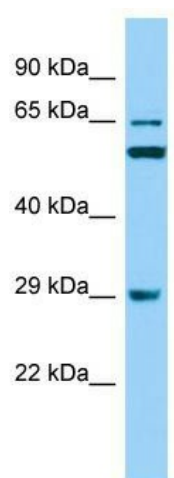
Product data:

Product Type:	Primary Antibodies
Applications:	WB
Recommended Dilution:	WB
Reactivity:	Human
Host:	Rabbit
Isotype:	IgG
Clonality:	Polyclonal
Immunogen:	The immunogen for anti-RAB19 antibody is: synthetic peptide directed towards the N-terminal region of Human RAB19. Synthetic peptide located within the following region: GVYTETQNTIGVDFTVRSLLDIDGKKVKMQVWDTAGQERFRTITQSYRS
Formulation:	Liquid. Purified antibody supplied in 1x PBS buffer with 0.09% (w/v) sodium azide and 2% sucrose. <i>Note that this product is shipped as lyophilized powder to China customers.</i>
Purification:	Affinity Purified
Conjugation:	Unconjugated
Storage:	Store at -20°C as received.
Stability:	Stable for 12 months from date of receipt.
Predicted Protein Size:	29 kDa
Gene Name:	RAB19, member RAS oncogene family
Database Link:	NP_001008749 Entrez Gene 401409 Human A4D1S5
Background:	The function of this protein remains unknown.
Synonyms:	RAB19B
Note:	Immunogen Sequence Homology: Dog: 100%; Pig: 100%; Rat: 100%; Horse: 100%; Human: 100%; Mouse: 100%; Bovine: 100%; Rabbit: 100%; Zebrafish: 100%; Guinea pig: 100%; Yeast: 86%



[View online »](#)

Product images:



Host: Rabbit; Target Name: RAB19; Sample
Tissue: RPMI-8226 Whole Cell lysates; Antibody
Dilution: 1.0 ug/ml