

## Product datasheet for **TA334358**

### Qsox2 Rabbit Polyclonal Antibody

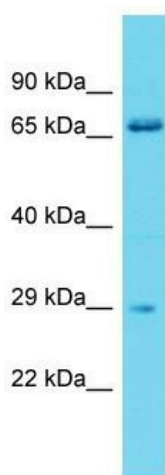
#### Product data:

Product Type:	Primary Antibodies
Applications:	WB
Recommended Dilution:	WB
Reactivity:	Mouse
Host:	Rabbit
Isotype:	IgG
Clonality:	Polyclonal
Immunogen:	The immunogen for anti-Qsox2 antibody is: synthetic peptide directed towards the C-terminal region of Mouse Qsox2. Synthetic peptide located within the following region: SWNEGQVLLFLKQHYSRDNLVDAYSVDQGSPGSVLRARPWLGQMARLSHV
Formulation:	Liquid. Purified antibody supplied in 1x PBS buffer with 0.09% (w/v) sodium azide and 2% sucrose. <i>Note that this product is shipped as lyophilized powder to China customers.</i>
Purification:	Affinity Purified
Conjugation:	Unconjugated
Storage:	Store at -20°C as received.
Stability:	Stable for 12 months from date of receipt.
Predicted Protein Size:	70 kDa
Gene Name:	quiescin Q6 sulfhydryl oxidase 2
Database Link:	<a href="#">NP_705787</a> <a href="#">Entrez Gene 227638 Mouse Q3TMX7</a>
Background:	Qsox2 catalyzes the oxidation of sulfhydryl groups in peptide and protein thiols to disulfides with the reduction of oxygen to hydrogen peroxide. It may contribute to disulfide bond formation in a variety of secreted proteins.
Synonyms:	DKFZp762A2013; QSCN6L1; SOXN
Note:	Immunogen Sequence Homology: Human: 100%; Rat: 86%; Bovine: 86%; Dog: 85%; Pig: 79%; Mouse: 79%; Guinea pig: 79%



[View online »](#)

## Product images:



Host: Rabbit  
Target Name: Qsox2  
Sample Tissue: Mouse Liver Lysate  
Antibody Dilution: 1.0 $\mu$ g/ml

Host: Rabbit; Target Name: Qsox2; Sample  
Tissue: Mouse Liver lysates; Antibody Dilution: 1.0  
ug/ml