

## Product datasheet for **TA334357**

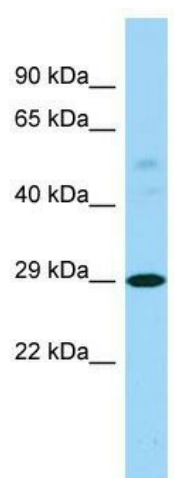
### PTCD3 Rabbit Polyclonal Antibody

#### Product data:

Product Type:	Primary Antibodies
Applications:	WB
Recommended Dilution:	WB
Reactivity:	Human
Host:	Rabbit
Isotype:	IgG
Clonality:	Polyclonal
Immunogen:	The immunogen for anti-PTCD3 antibody is: synthetic peptide directed towards the C-terminal region of Human PTCD3. Synthetic peptide located within the following region: LEVIPKIWKDSKEYGHTFRSDLREEILMLMARDKHPPELQVAFADCAADI
Formulation:	Liquid. Purified antibody supplied in 1x PBS buffer with 0.09% (w/v) sodium azide and 2% sucrose. <i>Note that this product is shipped as lyophilized powder to China customers.</i>
Purification:	Affinity Purified
Conjugation:	Unconjugated
Storage:	Store at -20°C as received.
Stability:	Stable for 12 months from date of receipt.
Predicted Protein Size:	30 kDa
Gene Name:	pentatricopeptide repeat domain 3
Database Link:	<a href="#">NP_060422</a> <a href="#">Entrez Gene 55037 Human</a> <a href="#">Q96EY7</a>
Background:	Mitochondrial RNA-binding protein that has a role in mitochondrial translation.
Synonyms:	MRP-S39
Note:	Immunogen Sequence Homology: Human: 100%; Dog: 93%; Pig: 93%; Bovine: 93%; Rabbit: 93%; Guinea pig: 93%; Rat: 86%; Horse: 86%; Mouse: 79%



[View online »](#)

**Product images:**

Host: Rabbit; Target Name: PTCD3; Sample Tissue: RPMI-8226 Whole Cell lysates; Antibody Dilution: 1.0 ug/ml; PTCD3 is supported by BioGPS gene expression data to be expressed in RPMI 8226