

Product datasheet for **TA334356**

PSMB11 Rabbit Polyclonal Antibody

Product data:

Product Type:	Primary Antibodies
Applications:	WB
Recommended Dilution:	WB
Reactivity:	Human
Host:	Rabbit
Isotype:	IgG
Clonality:	Polyclonal
Immunogen:	The immunogen for anti-PSMB11 antibody is: synthetic peptide directed towards the C-terminal region of Human PSMB11. Synthetic peptide located within the following region: HVRESGWEHVSRSDACVLYVELQKLEPEPEEDASHAHPEPATAHRAAED
Formulation:	Liquid. Purified antibody supplied in 1x PBS buffer with 0.09% (w/v) sodium azide and 2% sucrose. <i>Note that this product is shipped as lyophilized powder to China customers.</i>
Purification:	Affinity Purified
Conjugation:	Unconjugated
Storage:	Store at -20°C as received.
Stability:	Stable for 12 months from date of receipt.
Predicted Protein Size:	33 kDa
Gene Name:	proteasome subunit beta 11
Database Link:	NP_001093250 Entrez Gene 122706 Human A5LHX3



[View online »](#)

Background:

Proteasomes generate peptides that are presented by major histocompatibility complex (MHC) I molecules to other cells of the immune system. Proteolysis is conducted by 20S proteasomes, complexes of 28 subunits arranged as a cylinder in 4 heteroheptameric rings: alpha-1 to -7, beta-1 to -7, beta-1 to -7, and alpha-1 to -7. The catalytic subunits are beta-1, beta-2), and beta-5 (PSMB5; MIM 600306). Three additional subunits, beta-1i, beta-2i, and beta-5i, are induced by gamma-interferon and are preferentially incorporated into proteasomes to make immunoproteasomes. PSMB11, or beta-5t, is a catalytic subunit expressed exclusively in cortical thymic epithelial cells .

Synonyms:

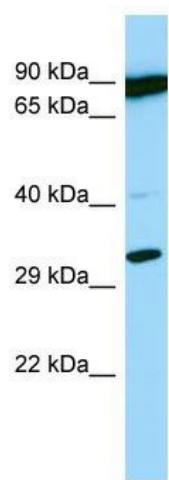
BETA5T

Note:

Immunogen Sequence Homology: Human: 100%; Rat: 83%

Protein Pathways:

Proteasome

Product images:

Host: Rabbit; Target Name: PSMB11; Sample
Tissue: OVCAR-3 Whole Cell lysates; Antibody
Dilution: 1.0 ug/ml