

Product datasheet for **TA334355**

PPP1R14D Rabbit Polyclonal Antibody

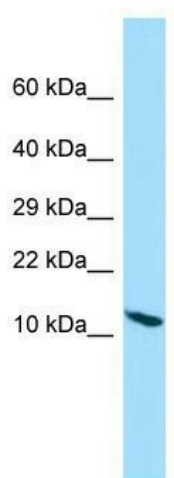
Product data:

Product Type:	Primary Antibodies
Applications:	WB
Recommended Dilution:	WB
Reactivity:	Human
Host:	Rabbit
Isotype:	IgG
Clonality:	Polyclonal
Immunogen:	The immunogen for anti-PPP1R14D antibody is: synthetic peptide directed towards the N-terminal region of Human PPP1R14D. Synthetic peptide located within the following region: CTSPSPDGENPCKKVHWASGRRRTSSTDSESKSHPDSSKIPRSRRPSRLT
Formulation:	Liquid. Purified antibody supplied in 1x PBS buffer with 0.09% (w/v) sodium azide and 2% sucrose.
Purification:	Affinity Purified
Conjugation:	Unconjugated
Storage:	Store at -20°C as received.
Stability:	Stable for 12 months from date of receipt.
Predicted Protein Size:	16 kDa
Gene Name:	protein phosphatase 1 regulatory inhibitor subunit 14D
Database Link:	NP_060196 Entrez Gene 54866 Human Q9NXH3
Background:	Protein phosphatase-1 is a major cellular phosphatase that reverses serine/threonine protein phosphorylation. PPP1R14D is a PP1 inhibitor that itself is regulated by phosphorylation.
Synonyms:	CPI17-like; GBPI-1; GBPI1
Note:	Immunogen Sequence Homology: Human: 100%; Pig: 91%; Rat: 91%; Guinea pig: 91%; Dog: 86%; Horse: 86%; Rabbit: 77%
Protein Families:	Druggable Genome



[View online »](#)

Product images:



WB Suggested Anti-PPP1R14D Antibody; Titration:
1.0 ug/ml; Positive Control: Jurkat Whole Cell