

Product datasheet for **TA334352**

PPFIBP2 Rabbit Polyclonal Antibody

Product data:

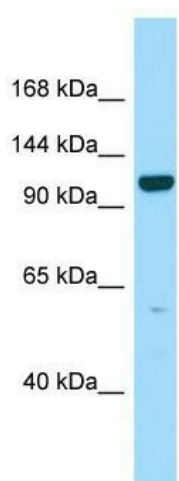
Product Type:	Primary Antibodies
Applications:	WB
Recommended Dilution:	WB
Reactivity:	Human
Host:	Rabbit
Isotype:	IgG
Clonality:	Polyclonal
Immunogen:	The immunogen for anti-PPFIBP2 antibody is: synthetic peptide directed towards the C-terminal region of Human PPFIBP2. Synthetic peptide located within the following region: LAMLLNIPPQKTLRRHLTTKFNALIGPEAEQEKREKMASPAYTPLTTA
Formulation:	Liquid. Purified antibody supplied in 1x PBS buffer with 0.09% (w/v) sodium azide and 2% sucrose. <i>Note that this product is shipped as lyophilized powder to China customers.</i>
Purification:	Affinity Purified
Conjugation:	Unconjugated
Storage:	Store at -20°C as received.
Stability:	Stable for 12 months from date of receipt.
Predicted Protein Size:	98 kDa
Gene Name:	PPFIA binding protein 2
Database Link:	NP_003612 Entrez Gene 8495 Human Q8ND30
Background:	This gene encodes a member of the LAR protein-tyrosine phosphatase-interacting protein (liprin) family. The encoded protein is a beta liprin and plays a role in axon guidance and neuronal synapse development by recruiting LAR protein-tyrosine phosphatases to the plasma membrane. Alternatively spliced transcript variants encoding multiple isoforms have been observed for this gene.
Synonyms:	Cclp1



[View online »](#)

Note: Immunogen Sequence Homology: Dog: 100%; Human: 100%; Pig: 93%; Rat: 93%; Horse: 93%; Mouse: 93%; Bovine: 93%; Guinea pig: 93%; Rabbit: 92%

Product images:



WB Suggested Anti-PPFIBP2 Antibody; Titration: 1.0 ug/ml; Positive Control: Fetal Brain