

## Product datasheet for TA334351

### PPEF2 Rabbit Polyclonal Antibody

#### Product data:

Product Type:	Primary Antibodies
Applications:	WB
Recommended Dilution:	WB
Reactivity:	Human
Host:	Rabbit
Isotype:	IgG
Clonality:	Polyclonal
Immunogen:	The immunogen for anti-PPEF2 antibody is: synthetic peptide directed towards the C-terminal region of Human PPEF2. Synthetic peptide located within the following region: LVTGEEKEPSRSASEADSEAGELRKPTQEEWRQVVDILWSDPMAQEGCKA
Formulation:	Liquid. Purified antibody supplied in 1x PBS buffer with 0.09% (w/v) sodium azide and 2% sucrose.
Purification:	Affinity Purified
Conjugation:	Unconjugated
Storage:	Store at -20°C as received.
Stability:	Stable for 12 months from date of receipt.
Predicted Protein Size:	83 kDa
Gene Name:	protein phosphatase with EF-hand domain 2
Database Link:	<a href="#">NP_006230</a> <a href="#">Entrez Gene 5470 Human</a> <a href="#">O14830</a>
Background:	This gene encodes a member of the serine/threonine protein phosphatase with EF-hand motif family. The protein contains a protein phosphatase catalytic domain, and at least two EF-hand calcium-binding motifs in its C terminus. Although its substrate(s) is unknown, the encoded protein, which is expressed specifically in photoreceptors and the pineal, has been suggested to play a role in the visual system. This gene shares high sequence similarity with the Drosophila retinal degeneration C (rdgC) gene.
Synonyms:	PPP7CB

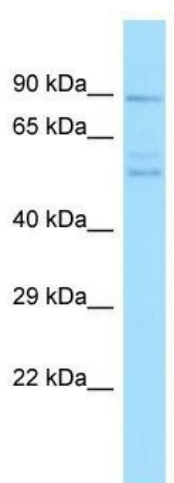


[View online »](#)

Note: Immunogen Sequence Homology: Human: 100%

Protein Families: Druggable Genome

### Product images:



Host: Rabbit; Target Name: PPEF2; Sample Tissue: PANC1 Whole Cell lysates; Antibody Dilution: 1.0 ug/ml