

Product datasheet for **TA334350**

Pola2 Rabbit Polyclonal Antibody

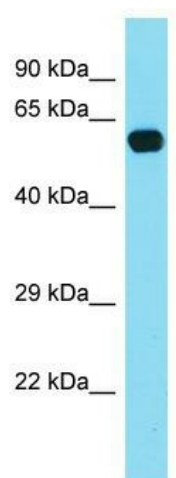
Product data:

Product Type:	Primary Antibodies
Applications:	WB
Recommended Dilution:	WB
Reactivity:	Mouse
Host:	Rabbit
Isotype:	IgG
Clonality:	Polyclonal
Immunogen:	The immunogen for anti-Pola2 antibody is: synthetic peptide directed towards the middle region of MOUSE Pola2. Synthetic peptide located within the following region: FSPSATPSQKYTSRTNRGEVVTTFGSAQGLSWSGRGGSGSVSLKVVDPE
Formulation:	Liquid. Purified antibody supplied in 1x PBS buffer with 0.09% (w/v) sodium azide and 2% sucrose. <i>Note that this product is shipped as lyophilized powder to China customers.</i>
Purification:	Affinity Purified
Conjugation:	Unconjugated
Storage:	Store at -20°C as received.
Stability:	Stable for 12 months from date of receipt.
Predicted Protein Size:	62 kDa
Gene Name:	polymerase (DNA directed), alpha 2
Database Link:	NP_001157529 Entrez Gene 18969 Mouse P33611
Background:	The function of this protein remains unknown.
Synonyms:	FLJ21662; FLJ37250
Note:	Immunogen Sequence Homology: Human: 100%; Rabbit: 100%; Pig: 93%; Rat: 93%; Horse: 93%; Guinea pig: 93%; Dog: 86%; Mouse: 86%; Bovine: 86%



[View online »](#)

Product images:



Host: Rabbit; Target Name: Pola2; Sample Tissue: Mouse Brain lysates; Antibody Dilution: 1.0 ug/ml