

Product datasheet for **TA334349**

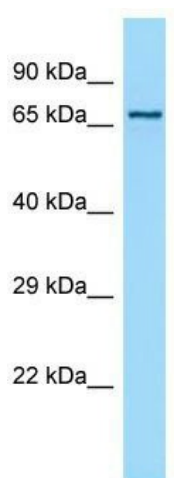
POLA2 Rabbit Polyclonal Antibody

Product data:

Product Type:	Primary Antibodies
Applications:	WB
Recommended Dilution:	WB
Reactivity:	Human
Host:	Rabbit
Isotype:	IgG
Clonality:	Polyclonal
Immunogen:	The immunogen for anti-POLA2 antibody is: synthetic peptide directed towards the N-terminal region of Human POLA2. Synthetic peptide located within the following region: VGLTSEILNSFEHEFLSKRLSKARHSTCKDSGHAGARDIVSIQELIEVEE
Formulation:	Liquid. Purified antibody supplied in 1x PBS buffer with 0.09% (w/v) sodium azide and 2% sucrose. <i>Note that this product is shipped as lyophilized powder to China customers.</i>
Purification:	Affinity Purified
Conjugation:	Unconjugated
Storage:	Store at -20°C as received.
Stability:	Stable for 12 months from date of receipt.
Predicted Protein Size:	66 kDa
Gene Name:	polymerase (DNA) alpha 2, accessory subunit
Database Link:	NP_002680 Entrez Gene 23649 Human Q14181
Background:	POLA2 may play an essential role at the early stage of chromosomal DNA replication by coupling the polymerase alpha/primase complex to the cellular replication machinery.
Synonyms:	FLJ21662; FLJ37250
Note:	Immunogen Sequence Homology: Human: 100%; Horse: 86%; Pig: 79%; Mouse: 79%
Protein Pathways:	DNA replication, Metabolic pathways, Purine metabolism, Pyrimidine metabolism



[View online »](#)

Product images:

Host: Rabbit; Target Name: POLA2; Sample Tissue: Jurkat Whole Cell lysates; Antibody Dilution: 1.0 ug/ml; POLA2 is supported by BioGPS gene expression data to be expressed in Jurkat