

Product datasheet for **TA334347**

PIH1D1 Rabbit Polyclonal Antibody

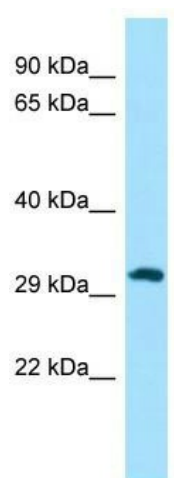
Product data:

Product Type:	Primary Antibodies
Applications:	WB
Recommended Dilution:	WB
Reactivity:	Human
Host:	Rabbit
Isotype:	IgG
Clonality:	Polyclonal
Immunogen:	The immunogen for anti-PIH1D1 antibody is: synthetic peptide directed towards the C-terminal region of Human PIH1D1. Synthetic peptide located within the following region: GLSLEIGENRLVMGGPQQLYHLDAYIPLQINSHESKAAFHRKRKQLMVAM
Formulation:	Liquid. Purified antibody supplied in 1x PBS buffer with 0.09% (w/v) sodium azide and 2% sucrose.
Purification:	Affinity Purified
Conjugation:	Unconjugated
Storage:	Store at -20°C as received.
Stability:	Stable for 12 months from date of receipt.
Predicted Protein Size:	32 kDa
Gene Name:	PIH1 domain containing 1
Database Link:	NP_060386 Entrez Gene 55011 Human Q9NWS0
Background:	The function of this protein remains unknown.
Synonyms:	NOP17
Note:	Immunogen Sequence Homology: Human: 100%; Dog: 93%; Rat: 93%; Horse: 92%; Rabbit: 91%; Pig: 86%; Guinea pig: 86%; Bovine: 79%
Protein Families:	Druggable Genome



[View online »](#)

Product images:



Host: Rabbit; Target Name: PIH1D1; Sample
Tissue: A549 Whole Cell lysates; Antibody
Dilution: 1.0 ug/ml