

Product datasheet for **TA334346**

PATL2 Rabbit Polyclonal Antibody

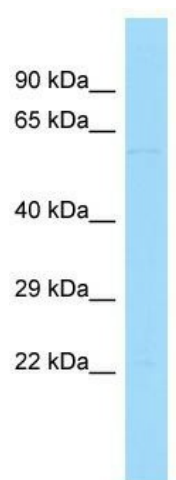
Product data:

Product Type:	Primary Antibodies
Applications:	WB
Recommended Dilution:	WB
Reactivity:	Human
Host:	Rabbit
Isotype:	IgG
Clonality:	Polyclonal
Immunogen:	The immunogen for anti-PATL2 antibody is: synthetic peptide directed towards the C-terminal region of Human PATL2. Synthetic peptide located within the following region: LQLLEIEEGWKYRPPPPCFSEQQSNQVEKLFQTLKTQEQQNNLEEAADGFL
Formulation:	Liquid. Purified antibody supplied in 1x PBS buffer with 0.09% (w/v) sodium azide and 2% sucrose. <i>Note that this product is shipped as lyophilized powder to China customers.</i>
Purification:	Affinity Purified
Conjugation:	Unconjugated
Storage:	Store at -20°C as received.
Stability:	Stable for 12 months from date of receipt.
Predicted Protein Size:	59 kDa
Gene Name:	PAT1 homolog 2
Database Link:	NP_001138584 Entrez Gene 197135 Human C9JE40
Background:	PATL2 is a RNA-binding protein that acts as a translational repressor.
Synonyms:	hPat1a; Pat1a
Note:	Immunogen Sequence Homology: Human: 100%; Rat: 93%; Mouse: 93%; Rabbit: 93%; Dog: 86%; Horse: 86%; Pig: 79%; Guinea pig: 79%; Bovine: 77%



[View online »](#)

Product images:



Host: Rabbit; Target Name: PATL2; Sample
Tissue: HeLa Whole Cell lysates; Antibody Dilution:
1.0 ug/ml