

## Product datasheet for TA334345

### PARS2 Rabbit Polyclonal Antibody

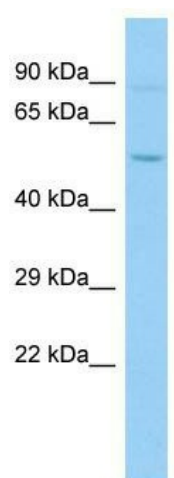
#### Product data:

Product Type:	Primary Antibodies
Applications:	WB
Recommended Dilution:	WB
Reactivity:	Human
Host:	Rabbit
Isotype:	IgG
Clonality:	Polyclonal
Immunogen:	The immunogen for anti-PARS2 antibody is: synthetic peptide directed towards the N-terminal region of Human PARS2. Synthetic peptide located within the following region: GGQKVNMPSPSLPAELWQATNRWDLMGKELLRLRDRHGKEYCLGPTHEEAI
Formulation:	Liquid. Purified antibody supplied in 1x PBS buffer with 0.09% (w/v) sodium azide and 2% sucrose. <i>Note that this product is shipped as lyophilized powder to China customers.</i>
Purification:	Affinity Purified
Conjugation:	Unconjugated
Storage:	Store at -20°C as received.
Stability:	Stable for 12 months from date of receipt.
Predicted Protein Size:	52 kDa
Gene Name:	prolyl-tRNA synthetase 2, mitochondrial (putative)
Database Link:	<a href="#">NP_689481</a> <a href="#">Entrez Gene 25973 Human Q7L3T8</a>
Background:	The function of this protein remains unknown.
Synonyms:	MT-PRORS; proRS
Note:	Immunogen Sequence Homology: Pig: 100%; Rat: 100%; Horse: 100%; Human: 100%; Mouse: 100%; Rabbit: 100%; Guinea pig: 100%; Bovine: 93%; Zebrafish: 85%
Protein Pathways:	Aminoacyl-tRNA biosynthesis



[View online »](#)

## Product images:



Host: Rabbit; Target Name: PARS2; Sample  
Tissue: PANC1 Whole Cell lysates; Antibody  
Dilution: 1.0 ug/ml