

Product datasheet for **TA334343**

P4HA3 Rabbit Polyclonal Antibody

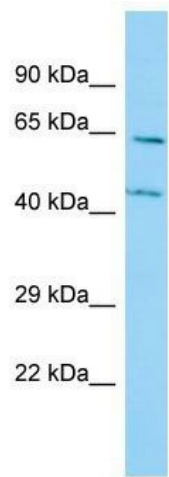
Product data:

Product Type:	Primary Antibodies
Applications:	WB
Recommended Dilution:	WB
Reactivity:	Human
Host:	Rabbit
Isotype:	IgG
Clonality:	Polyclonal
Immunogen:	The immunogen for anti-P4HA3 antibody is: synthetic peptide directed towards the N-terminal region of Human P4HA3. Synthetic peptide located within the following region: EDSTTPVANPLLAFTLIKRLQSDWRNVVHSLEASENIRALKDGYEKVEQD
Formulation:	Liquid. Purified antibody supplied in 1x PBS buffer with 0.09% (w/v) sodium azide and 2% sucrose. <i>Note that this product is shipped as lyophilized powder to China customers.</i>
Purification:	Affinity Purified
Conjugation:	Unconjugated
Storage:	Store at -20°C as received.
Stability:	Stable for 12 months from date of receipt.
Predicted Protein Size:	60 kDa
Gene Name:	prolyl 4-hydroxylase subunit alpha 3
Database Link:	NP_878907 Entrez Gene 283208 Human Q7Z4N8



[View online »](#)

- Background:** This gene encodes a component of prolyl 4-hydroxylase, a key enzyme in collagen synthesis composed of two identical alpha subunits and two beta subunits. The encoded protein is one of several different types of alpha subunits and provides the major part of the catalytic site of the active enzyme. In collagen and related proteins, prolyl 4-hydroxylase catalyzes the formation of 4-hydroxyproline that is essential to the proper three-dimensional folding of newly synthesized procollagen chains. Alternatively spliced transcript variants have been observed, but their full-length nature has not been determined.
- Synonyms:** 2-oxoglutarate 4-dioxygenase (proline 4-hydroxylase); alpha III subunit; alpha polypeptide III; C-P4H alpha III; collagen prolyl 4-hydroxylase alpha(III); procollagen-proline; prolyl 4-hydroxylase
- Note:** Immunogen Sequence Homology: Dog: 100%; Pig: 100%; Rat: 100%; Human: 100%; Mouse: 100%; Horse: 93%; Bovine: 93%; Guinea pig: 86%
- Protein Families:** Druggable Genome
- Protein Pathways:** Arginine and proline metabolism, Metabolic pathways
- Product images:**



Host: Rabbit; Target Name: P4HA3; Sample Tissue: A549 Whole Cell lysates; Antibody Dilution: 1.0 ug/ml