

Product datasheet for **TA334342**

P2Y6 (P2RY6) Rabbit Polyclonal Antibody

Product data:

Product Type:	Primary Antibodies
Applications:	WB
Recommended Dilution:	WB
Reactivity:	Human
Host:	Rabbit
Isotype:	IgG
Clonality:	Polyclonal
Immunogen:	The immunogen for anti-P2RY6 antibody is: synthetic peptide directed towards the N-terminal region of Human P2RY6. Synthetic peptide located within the following region: NLHGSILFLTCISFQRYLGICHPLAPWHKRGGRRAAWLVCVAVWLAVTTQ
Formulation:	Liquid. Purified antibody supplied in 1x PBS buffer with 0.09% (w/v) sodium azide and 2% sucrose. <i>Note that this product is shipped as lyophilized powder to China customers.</i>
Purification:	Affinity Purified
Conjugation:	Unconjugated
Storage:	Store at -20°C as received.
Stability:	Stable for 12 months from date of receipt.
Predicted Protein Size:	36 kDa
Gene Name:	pyrimidinergic receptor P2Y6
Database Link:	NP_789766 Entrez Gene 5031 Human Q15077
Background:	The product of this gene belongs to the family of G-protein coupled receptors. This family has several receptor subtypes with different pharmacological selectivity, which overlaps in some cases, for various adenosine and uridine nucleotides. This receptor is responsive to UDP, partially responsive to UTP and ADP, and not responsive to ATP. Four transcript variants encoding the same isoform have been identified for this gene.
Synonyms:	P2Y6



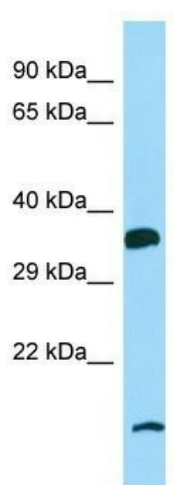
[View online »](#)

Note: Immunogen Sequence Homology: Dog: 100%; Pig: 100%; Rat: 100%; Human: 100%; Bovine: 100%; Rabbit: 100%; Mouse: 93%; Guinea pig: 93%

Protein Families: Druggable Genome, GPCR, Transmembrane

Protein Pathways: Neuroactive ligand-receptor interaction

Product images:



Host: Rabbit; Target Name: P2RY6; Sample Tissue: MCF7 Whole Cell lysates; Antibody Dilution: 1.0 ug/ml; P2RY6 is supported by BioGPS gene expression data to be expressed in MCF7