

Product datasheet for **TA334338**

NENF Rabbit Polyclonal Antibody

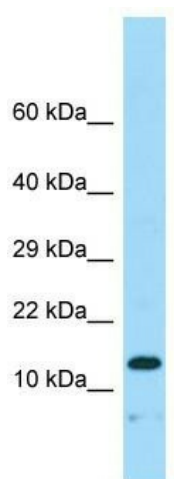
Product data:

Product Type:	Primary Antibodies
Applications:	WB
Recommended Dilution:	WB
Reactivity:	Human
Host:	Rabbit
Isotype:	IgG
Clonality:	Polyclonal
Immunogen:	The immunogen for anti-NENF antibody is: synthetic peptide directed towards the N-terminal region of Human NENF. Synthetic peptide located within the following region: AERGPPVRLFTEELARYGGEEEDQPIYLAVKGVVFDVTSKGFEYGRGAP
Formulation:	Liquid. Purified antibody supplied in 1x PBS buffer with 0.09% (w/v) sodium azide and 2% sucrose.
Purification:	Affinity Purified
Conjugation:	Unconjugated
Storage:	Store at -20°C as received.
Stability:	Stable for 12 months from date of receipt.
Predicted Protein Size:	15 kDa
Gene Name:	neudesin neurotrophic factor
Database Link:	NP_037481 Entrez Gene 29937 Human Q9UMX5
Background:	This gene encodes a neurotrophic factor that may play a role in neuron differentiation and development. A pseudogene of this gene is found on chromosome 12. Alternate splicing of this gene results in multiple transcript variants.
Synonyms:	CIR2; SCIRP10; SPUF
Note:	Immunogen Sequence Homology: Dog: 100%; Pig: 100%; Rat: 100%; Human: 100%; Mouse: 100%; Bovine: 100%; Rabbit: 100%; Guinea pig: 100%; Zebrafish: 92%



[View online »](#)

Protein Families: Druggable Genome, Secreted Protein

Product images:

Host: Rabbit; Target Name: NENF; Sample Tissue: Fetal Heart lysates; Antibody Dilution: 1.0 ug/ml