

Product datasheet for **TA334336**

NAD Synthetase (NADSYN1) Rabbit Polyclonal Antibody

Product data:

Product Type:	Primary Antibodies
Applications:	WB
Recommended Dilution:	WB
Reactivity:	Human
Host:	Rabbit
Isotype:	IgG
Clonality:	Polyclonal
Immunogen:	The immunogen for anti-NADSYN1 antibody is: synthetic peptide directed towards the C-terminal region of Human NADSYN1. Synthetic peptide located within the following region: PAYHAENYSPEDNRFDLRPFLYNTSWPWQFRCIENQVLQLERAEPQSLDG
Formulation:	Liquid. Purified antibody supplied in 1x PBS buffer with 0.09% (w/v) sodium azide and 2% sucrose. <i>Note that this product is shipped as lyophilized powder to China customers.</i>
Purification:	Affinity Purified
Conjugation:	Unconjugated
Storage:	Store at -20°C as received.
Stability:	Stable for 12 months from date of receipt.
Predicted Protein Size:	78 kDa
Gene Name:	NAD synthetase 1
Database Link:	NP_060631 Entrez Gene 55191 Human Q6IA69
Background:	Nicotinamide adenine dinucleotide (NAD) is a coenzyme in metabolic redox reactions, a precursor for several cell signaling molecules, and a substrate for protein posttranslational modifications. NAD synthetase (EC 6.3.5.1) catalyzes the final step in the biosynthesis of NAD from nicotinic acid adenine dinucleotide (NaAD).
Synonyms:	FLJ10631; FLJ36703; FLJ40627

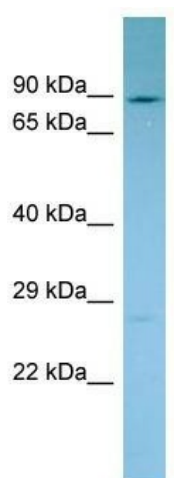


[View online »](#)

Note: Immunogen Sequence Homology: Human: 100%; Pig: 93%; Rat: 93%; Mouse: 93%; Yeast: 93%; Guinea pig: 93%; Dog: 86%; Horse: 86%; Bovine: 86%; Goat: 85%

Protein Pathways: Metabolic pathways, Nicotinate and nicotinamide metabolism

Product images:



Host: Rabbit; Target Name: NADSYN1; Sample Tissue: PANC1 Whole Cell lysates; Antibody Dilution: 1.0 ug/ml