

Product datasheet for **TA334334**

Naaladl2 Rabbit Polyclonal Antibody

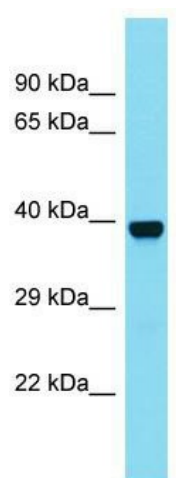
Product data:

Product Type:	Primary Antibodies
Applications:	WB
Recommended Dilution:	WB
Reactivity:	Human
Host:	Rabbit
Isotype:	IgG
Clonality:	Polyclonal
Immunogen:	The immunogen for anti-Naaladl2 antibody is: synthetic peptide directed towards the C-terminal region of Mouse Naaladl2. Synthetic peptide located within the following region: SLKGNESVPHLLALASRLRESAELFQSDEMRPANDPKERAPSRVRLND
Formulation:	Liquid. Purified antibody supplied in 1x PBS buffer with 0.09% (w/v) sodium azide and 2% sucrose. <i>Note that this product is shipped as lyophilized powder to China customers.</i>
Purification:	Affinity Purified
Conjugation:	Unconjugated
Storage:	Store at -20°C as received.
Stability:	Stable for 12 months from date of receipt.
Predicted Protein Size:	38 kDa
Gene Name:	N-acetylated alpha-linked acidic dipeptidase-like 2
Database Link:	XP_915927 Entrez Gene 635702 Mouse
Background:	The function of this protein remains unknown.
Synonyms:	OTTHUMP00000211440
Note:	Immunogen Sequence Homology: Dog: 100%; Pig: 100%; Horse: 100%; Human: 100%; Rabbit: 100%; Guinea pig: 100%; Rat: 93%; Yeast: 89%; Zebrafish: 86%



[View online »](#)

Product images:



Host: Rabbit; Target Name: Naaladl2; Sample
Tissue: Mouse Liver lysates; Antibody Dilution: 1.0
ug/ml