

## Product datasheet for **TA334333**

### **MYSM1 Rabbit Polyclonal Antibody**

#### **Product data:**

Product Type:	Primary Antibodies
Applications:	WB
Recommended Dilution:	WB
Reactivity:	Human
Host:	Rabbit
Isotype:	IgG
Clonality:	Polyclonal
Immunogen:	The immunogen for anti-MYSM1 antibody is: synthetic peptide directed towards the N-terminal region of Human MYSM1. Synthetic peptide located within the following region: KLIGSRTVLQVKSYARQYFKNKVKCGLDKETPNQKTGHNLQVKNEDKGTK
Formulation:	Liquid. Purified antibody supplied in 1x PBS buffer with 0.09% (w/v) sodium azide and 2% sucrose. <i>Note that this product is shipped as lyophilized powder to China customers.</i>
Purification:	Affinity Purified
Conjugation:	Unconjugated
Storage:	Store at -20°C as received.
Stability:	Stable for 12 months from date of receipt.
Predicted Protein Size:	91 kDa
Gene Name:	Myb like, SWIRM and MPN domains 1
Database Link:	<a href="#">NP_001078956</a> <a href="#">Entrez Gene 114803 Human</a> <a href="#">Q5VVJ2</a>
Background:	MYSM1 is a metalloprotease that specifically deubiquitinates monoubiquitinated histone H2A, a specific tag for epigenetic transcriptional repression, thereby acting as a coactivator. It preferentially deubiquitinates monoubiquitinated H2A in hyperacetylated nucleosomes. Deubiquitination of histone H2A leads to facilitate the phosphorylation and dissociation of histone H1 from the nucleosome. MYSM1 acts as a coactivator by participating in the initiation and elongation steps of androgen receptor (AR)-induced gene activation.



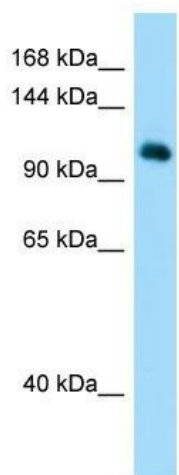
[View online »](#)

Synonyms: 2A-DUB; 2ADUB

Note: Immunogen Sequence Homology: Human: 100%

Protein Families: Protease

### Product images:



Host: Rabbit; Target Name: MYSM1; Sample Tissue: HeLa Whole Cell lysates; Antibody Dilution: 1.0 ug/ml