

## Product datasheet for TA334331

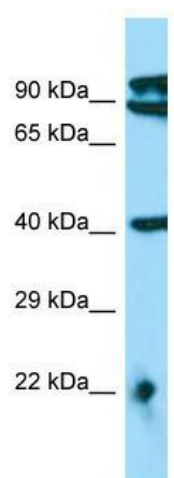
### MTERF2 Rabbit Polyclonal Antibody

#### Product data:

Product Type:	Primary Antibodies
Applications:	WB
Recommended Dilution:	WB
Reactivity:	Human
Host:	Rabbit
Isotype:	IgG
Clonality:	Polyclonal
Immunogen:	The immunogen for anti-MTERFD3 antibody is: synthetic peptide directed towards the N-terminal region of Human MTERFD3. Synthetic peptide located within the following region: TAVNTQRKLWQLVCKNEEELIKLIEQFPESFFTIKDQENQKLNQVFFQEL
Formulation:	Liquid. Purified antibody supplied in 1x PBS buffer with 0.09% (w/v) sodium azide and 2% sucrose.
Purification:	Affinity Purified
Conjugation:	Unconjugated
Storage:	Store at -20°C as received.
Stability:	Stable for 12 months from date of receipt.
Predicted Protein Size:	42 kDa
Gene Name:	mitochondrial transcription termination factor 2
Database Link:	<a href="#">NP_079474</a> <a href="#">Entrez Gene 80298 Human</a> <a href="#">Q49AM1</a>
Background:	MTERFD3 binds promoter DNA and regulates mitochondrial transcription. It is required for normal levels of transcription, both for mRNA and tRNA and is required for normal mitochondrial protein synthesis, assembly of respiratory complexes and normal mitochondrial function.
Synonyms:	MTERFD3; mTERFL
Note:	Immunogen Sequence Homology: Human: 100%; Dog: 93%; Pig: 93%; Rat: 86%; Horse: 86%; Mouse: 86%; Bovine: 86%; Rabbit: 85%; Guinea pig: 82%


[View online »](#)

## Product images:



WB Suggested Anti-MTERFD3 Antibody; Titration:  
1.0 ug/ml; Positive Control: HepG2 Whole Cell