

Product datasheet for **TA334330**

MSGN1 Rabbit Polyclonal Antibody

Product data:

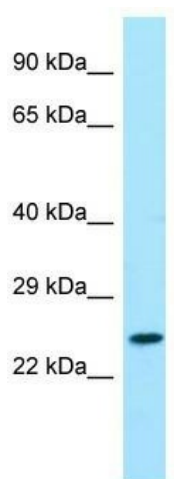
Product Type:	Primary Antibodies
Applications:	WB
Recommended Dilution:	WB
Reactivity:	Human
Host:	Rabbit
Isotype:	IgG
Clonality:	Polyclonal
Immunogen:	The immunogen for anti-MSGN1 antibody is: synthetic peptide directed towards the C-terminal region of Human MSGN1. Synthetic peptide located within the following region: HLQGGGGPKAQKGTKVRMSVQRRRKASEREKLRMRTLADALHTRLRNYLPP
Formulation:	Liquid. Purified antibody supplied in 1x PBS buffer with 0.09% (w/v) sodium azide and 2% sucrose. <i>Note that this product is shipped as lyophilized powder to China customers.</i>
Purification:	Affinity Purified
Conjugation:	Unconjugated
Storage:	Store at -20°C as received.
Stability:	Stable for 12 months from date of receipt.
Predicted Protein Size:	21 kDa
Gene Name:	mesogenin 1
Database Link:	NP_001099039 Entrez Gene 343930 Human A6NI15
Background:	Involved in specifying the paraxial, but not dorsal, mesoderm. May regulate the expression of T-box transcription factors required for mesoderm formation and differentiation.
Synonyms:	MSOG; pMsgn1
Note:	Immunogen Sequence Homology: Dog: 100%; Pig: 100%; Rat: 100%; Horse: 100%; Human: 100%; Mouse: 100%; Bovine: 100%; Rabbit: 100%; Guinea pig: 93%; Zebrafish: 79%



[View online »](#)

Protein Families: Druggable Genome

Product images:



Host: Rabbit; Target Name: MSGN1; Sample Tissue: HepG2 Whole Cell lysates; Antibody Dilution: 1.0 ug/ml